



SIERRA

MARINE PARTS CATALOG

Engine & Drive Parts • Instrumentation
Switches • Engine Diagnostics
SHIELDS Hose • Oils & Lubricants
Tools & Accessories



THE VERY BEST PARTS OF BOATING

NO. 8033



Premier Pro White Premier Pro Driftwood Lido Lido Pro Argent Pro

Fuel Gauge	2" 62718P	2" 62551P	2" 61549P	2" 65496P	2" 59655P	2" 65524P
Hourmeter 10,000 hrs (non-Illuminated)	2" 62719P	2" 62538P	2" 62952P	2" 65497P	2" 59416P	
Oil Pressure Gauge (SW) 0-80 PSI	2" 62720P	2" 62542P	2" 61550P	2" 65501P	2" 59653P	2" 65526P
Oil Pressure Gauge (SW) 0-100 PSI		2" 62543P		2" 65498P		2" 65525P
Water Pressure Kit (Outboard) 30 PSI	2" 62721P		2" 62960P	2" 65507P	2" 63523P	2" 65551P
Water Pressure Kit (Outboard) 40 PSI		2" 67657P				
GPS Speedo 35 MPH	3" 781-627-035P	3" 781-625-035P			3" 781-310-035P	
GPS Speedo 60 MPH	3" 781-627-060P	3" 781-625-060P			3" 781-310-060P	3" 781-294-060P
GPS Speedo 80 MPH	3" 781-627-080P	3" 781-625-080P				
GPS Speedo 120 MPH	3" 781-627-120P	3" 781-625-120P				
Speedo Kit 35 MPH (Pitot Type)				3" 61751P	3" 61751P	
Speedo Kit 50 MPH (Pitot Type)			3" 61547P	3" 61752P	3" 61752FP	3" 65529P, 5" 65530P
Speedo Kit 60 MPH (Pitot Type)						
Speedo Kit 65 MPH (Pitot Type)	3" 62722P	3" 62546P		3" 65510P	3" 59713P	
Speedo Kit 70 MPH (Pitot Type)						3" 65531P
Speedo Kit 80 MPH (Pitot Type)				3" 65670P		
Tachometer, 0-6000 RPM O/B & 4 Cycle Gas	3" 62724P					
Tachometer, 0-7000 RPM O/B & 4 Cycle Gas		3" 62561P	3" 61546P	3" 65693P	3" 59737P	3" 65535P, 5" 65536P
Tachometer, 0-8000 RPM O/B & 4 Cycle Gas	3" 62725P					
Tachometer 0-4000 RPM Diesel Alt		3" 62547P		3" 65671P		3" 65537P
Diesel Magnetic Pickup, 90-180 Teeth		3" 62548P		3" 65692P		
Tach/Hour 0-7000 RPM O/B & 4 Cycle Gas		3" 62565P		3" 65129P		3" 65545P
Tachometer - System check gauge				3" 64477FP		
Water Temp (SW) 120-240°F	2" 62729P	2" 62540P	2" 61552P*	2" 65509P	2" 59654P	2" 65553P
Water Temperature Kit (Outboards)	2" 62748P			2" 65508P		
Trim Gauge Evinrude/Johnson	2" 62726P	2" 62550P		2" 65502P		2" 65547P
Trim Gauge Honda			2" 62375P	2" 65503P		
Trim Gauge Mercury OB & IO, Mariner, Force, Cobra, Volvo DP & SX, Yamaha 2001 & Up	2" 62727P	2" 62549P	2" 61551P	2" 65504P	2" 59657P	2" 65548P
Trim Gauge 2002 and newer Suzuki 4-Stroke	2" 62726P	2" 62550P		2" 65502P		2" 65547P
Trim Gauge pre 2001 Yamaha outboards	2" 62728P			2" 65505P		
Voltmeter 12v	2" 62730P †	2" 62555P	2" 61548P	2" 65506P	2" 59656P	2" 65550P
Voltmeter 24v						
12V Battery Condition Indicator						
Engine Synchronizer Gauge				2" 65495P		
System Check Gauge - Evinrude/Johnson				2" 65206SSP		
Systems Monitor - Suzuki						
Ammeter 60-0-60						

* **Twin Engine Outboard Add On Kit - Tachometer, Voltmeter**








* **Twin Engine Inboard/Stern Drive Kit - Tachometer, Water Temperature, Oil Pressure, Voltmeter**

* **Outboard Kit - Tachometer, Speedometer (65 MPH with pitot tube), Fuel Gauge (compatible with common marine senders), and Voltmeter. Matching Trim Gauges, Hourmeters and Water Pressure or Temperature Kits are available separately. (Not for diesels.)**

* **Stern Drive Kit - Tachometer, Speedometer (65 MPH with pitot tube), Fuel Gauge, Water Temperature Gauge, Oil Pressure Gauge (all compatible with common marine senders), and Voltmeter. Matching Trim Gauges and Hourmeters are available separately for stern drive applications. (Not for diesels.)**

* (100-220°F) range.

* 0-3500 RPM.

						
Sahara	Sterling	Black Sterling	Amega	Arctic	Eclipse	Heavy Duty
2" 59707P	2" 63477P	2" 67021P	2" 57902P	2" 68365P	2" 68390P	2" 80150P
			2" 84760P	2" 68366P	2" 68391P	2" 82760P
2" 59705P	2" 63479P	2" 67022P	2" 57903P	2" 68367P	2" 68392P	2" 80180P
			2" 57929P		2" 68393P	2" 80181P
2" 69870P	2" 63481P		2" 61238P			
		2" 67382P	2" 68357P	2" 68369P	2" 68394P	
			3" 781-579-035P	3" 781-683-035P	3" 781-684-035P	
			3" 781-579-060P	3" 781-683-060P	3" 781-684-060P	
			3" 781-579-080P	3" 781-683-080P	3" 781-684-080P	
3" 61826P			3" 58342P	3" 68370P	3" 68395P	
3" 61163P		3" 68960P	3" 57898P			3" 80514P
3" 59704P	3" 63475P		3" 57900P	3" 68371P	3" 68396P	
		3" 67285P				
3" 63076P	3" 63476P		3" 57899P	3" 68372P	3" 68397P	
						3" 82288P
3" 59703P	3" 63473P	3" 67363P	3" 58255P	3" 68374P	3" 68399P	
			3" 68358P	3" 68373P	3" 68398P	3" 82302P*
						3" 82303P
3" 69743P	3" 63474P	3" 67364P	3" 68443P	3" 68375P	3" 68400P	
3" 61901P			3" 58935P			
2" 59706P	2" 63480P	2" 67020P	2" 57904P	2" 68376P	2" 68401P	2" 80590P
			2" 58862P*	2" 68377P	2" 68402P	
2" 61908P	2" 63483P	2" 67365P	2" 58431P	2" 68378P	2" 68403P	
2" 62369P	2" 64475P	2" 67855P	2" 68359P	2" 68379P	2" 68404P	
2" 59709P	2" 63482P	2" 67023P	2" 57905P	2" 68380P	2" 68405P	
2" 61908P	2" 63483P	2" 67365P	2" 58431P	2" 68378P	2" 68403P	
			2" 61748P	2" 68381P	2" 68406P	
2" 59708P	2" 63478P	2" 67019P	2" 57901P	2" 68383P	2" 68408P	2" 80134P †
						2" 80131P
			2" 68361P	2" 68384P	2" 68409P	
						2" 80730P
2" 66956P	2" 63585P		2" 65205P	2" 68385P	2" 68410P	
			2" 68356P	2" 68364P	2" 68389P	2" 80710P

* **Outboard Kit w/ Tach/Hr** - Tachometer/Hourmeter, Speedometer (65 MPH w/ Pitot Tube, Fuel Gauge (compatible with common marine senders), and Voltmeter.

* **Inboard/Sterndrive Kit** - Tachometer/Hourmeter, Speedometer (65 MPH w/ Pitot Tube, fuel Gauge, Water Temperature Gauge, Oil Pressure Gauge (all compatible with common marine senders), and Voltmeter.

* Matching Trim Gauges are available separately. Not for diesels.

† 8-16 VDC



MATRIX GAUGES - The Matrix gauge set is intended to operate on Mercury SmartCraft engines (max 4 engines/2 stations) utilizing the SmartCraft® protocol. The gauges operate on 12 volt systems and support single, dual, triple or quad engine applications. In a Matrix gauge set, the 3" tachometer is the master and connects directly to the SmartCraft data bus. All other gauges are slaves and connect to the tachometer RS-485 private bus (immune to electrical noise, more robust and reliable). The tachometer reads SmartCraft engine parameters and forwards them on the private bus for the slave gauges.



FEATURES:

- Smart Tachometer CANbus driven
- All 2" gauges receive data from tachometers
- LCD on Tachometer and Speedo displays all available data and alarms
- IP67 waterproof/ submersible housings (with Connector fitted)
- Dry Nitrogen filled to minimize fogging
- LED dimmable, automotive style backlighting (red)
- CANbus connectivity

SELECTION GUIDE:

GAUGE DESCRIPTION	SIZE	PART NO.
Speedometer w/ LCD US 90 MPH	3"	70002D
Fuel Primary	2"	70003D
Fuel Secondary	2"	69992D
Voltmeter 10 - 16 VDC	2"	70004D
Temperature 240F	2"	70006D
Water pressure 40 PSI	2"	69994D
Oil Pressure 80 PSI	2"	70005D
Trim	2"	69993D
Tachometer - Smartcraft	3"	70000D
Tachometer - NEMA 2000	3"	70001D

PART NO.	DESCRIPTION
69995K	Harness - Tachometer to Smartcraft, 30"
69996K	Harness - Tachometer to NMEA 2000, 30"
69997K	Harness - Tachometer to Speedometer, 48"
69998K	Terminator - Needed when no speedo is used
69999K	Harness - Any 2" gauge to another, 8"

PARAMETERS SUPPORTED			
• Engine RPM	• Reserve Oil Level	• Throttle Position	• Tank 2
• Coolant Temperature	• Water Pressure	• Load Percent	• RPM Synch
• Engine Oil Pressure	• Coolant Pressure	• Oil Level	• Trim Synch
• Engine Hours	• Oil Temperature	• Boost Pressure	
• Fuel Low	• Fuel Pressure	• Tank 1	



GPS SPEEDOMETERS - These GPS speedometers provide accurate speed over ground readings and heading information all in one attractive package. Available in various speed ranges to meet your application, the GPS speedometer is offered in a number of popular styles to match the colors in your boat like Premier Pro, White Premier Pro, Amega, Arctic, Eclipse, Lido Pro and Argent Pro instrument lines.



FEATURES:

- Available in speed ranges of 35 MPH, 60 MPH, 80 MPH and 120 MPH.
- Included LCD heading display to show course over ground.
- Use our GPS antenna (sold separately) or connect to an existing NMEA 0183 GPS device – connectors included.
- Speed accuracy of +/-1 MPH (once moving).
- Heading accuracy of +/-1 degree (once moving).
- Ideal for slow speed applications like pontoon boats and for high speed performance boats where pitot tubes do not perform well.

SELECTION GUIDE:

PART NUMBER	GAUGE DESCRIPTION	SIZE	DIAL RANGE	SENDER CODE
Premier Pro: 781-627-035P 781-627-060P 781-627-080P • 781-627-120P	35 MPH 60 MPH 80 MPH 120 MPH	3" 3" 3" 3"	0-35 MPH 0-60 MPH 0-80 MPH 0-120 MPH	GPS RECEIVER GPS RECEIVER GPS RECEIVER GPS RECEIVER
White Premier Pro: 781-625-035P 781-625-060P 781-625-080P • 781-625-120P	35 MPH 60 MPH 80 MPH 120 MPH	3" 3" 3" 3"	0-35 MPH 0-60 MPH 0-80 MPH 0-120 MPH	GPS RECEIVER GPS RECEIVER GPS RECEIVER GPS RECEIVER
Amega: 781-579-035P 781-579-060P 781-579-080P •	35 MPH 60 MPH 80 MPH	3" 3" 3"	0-35 MPH 0-60 MPH 0-80 MPH	GPS RECEIVER GPS RECEIVER GPS RECEIVER
Arctic: 781-683-035P 781-683-060P 781-683-080P •	35 MPH 60 MPH 80 MPH	3" 3" 3"	0-35 MPH 0-60 MPH 0-80 MPH	GPS RECEIVER GPS RECEIVER GPS RECEIVER
Eclipse: 781-684-035P 781-684-060P 781-684-080P •	35 MPH 60 MPH 80 MPH	3" 3" 3"	0-35 MPH 0-60 MPH 0-80 MPH	GPS RECEIVER GPS RECEIVER GPS RECEIVER
Lido Pro: 781-310-035P 781-310-060P	35 MPH 60 MPH	3" 3"	0-35 MPH 0-60 MPH	GPS RECEIVER GPS RECEIVER
Argent Pro: 781-294-060P	60 MPH	3"	0-35 MPH	GPS RECEIVER

• Display Packaged Item

GPS RECEIVERS

- Highly sensitive receiver
- Precise information output even when mounted under a fiberglass console or bimini top
- Durable exterior
- Updates once every second to output accurate NMEA 0183 information (*Updates 10 times per second.)



68982P
GPS RECEIVER
4 ft. long

69053P*
GPS RECEIVER (HIGH SPEED)
4 ft. long



68755P
GPS RECEIVER
25 ft. long

PREMIER PRO - A very popular OEM line, Premier features black dials with modern white and blue graphics. When lighted, white dial grads become red and pointer lights white. These instruments feature automotive type light-piping and a fog-resistant design for outstanding readability.



FEATURES:

- Full automotive type lighting, no “halo” around dial edges. When lit, white dial grads become red, pointer lights white.
- Black dial, white graduations/numerals (metrics in blue), white pointer staff.
- Scratch resistant curved glass lenses, with black, near-flush bezels.
- U.S. and metric scales, with ISO symbols, where appropriate.
- Optional add-on eyebrow or square bezels available (See Gauge Accessories for details).
- Line includes standard ignition engine synchronizer kits including module.
- Fog-Resistant Design! Complies with SAE J-1810.

SELECTION GUIDE:

GAUGE DESCRIPTION	SIZE	DIAL RANGE	SENDER CODE	PART NUMBER
Fuel Gauge:	2"	E-1/2-F	REQUIRES "F"	62718P •
Hourmeter:	2"	10,000 Hrs.	NONE REQUIRED	62719P •
Oil Pressure Gauge (Electric): Oil Pressure 80 PSI	2"	0-80 PSI	REQUIRES "C"	62720P •
GPS Speedometer:				
35 MPH	3"	0-35 MPH	GPS RECEIVER	781-627-035P
60 MPH	3"	0-60 MPH	GPS RECEIVER	781-627-060P
80 MPH	3"	0-80 MPH	GPS RECEIVER	781-627-080P •
120 MPH	3"	0-120 MPH	GPS RECEIVER	781-627-120P
Speedometer Kits:				
65 MPH (Pitot type)	3"	10-65 MPH	INCLUDES "G"	62722P •
80 MPH (Pitot type) Head Only	3"	20-80 MPH		62723PH
Tachometers (Electric):				
O/B & 4-Stroke Gas Engines*	3"	0-6000 RPM	O/B ALT./COIL	62724P •
O/B & 4-Stroke Gas Engines*	3"	0-8000 RPM	O/B ALT./COIL	62725P •
Trim Gauges (Outboard, I/O): Johnson/Evinrude (All) & Suzuki 4-stroke 2002 & Up	2"	UP-DOWN	BY ENG. MFR	62726P •
Mercury O/B & I/O, Mariner, Force, Cobra, Volvo DP & SX, Yamaha 2001 & Up	2"	UP-DOWN	BY ENG. MFR	62727P •
Yamaha Outboards pre-2001	2"	UP-DOWN	BY ENG. MFR	62728P •
Voltmeter-12 Volt:	2"	8-16 VDC	NONE REQUIRED	62730P •
Water Pressure Kit (Outboard):** (Each kit includes fittings and 20 feet of tubing)	2"	30 PSI	INCLUDES "WP"	62721P •
Water Temp. Kit (Outboard):** (For all electric-start outboards)	2"	COLD-HOT	INCLUDES "J"	62748P •
Water Temp. Gauge (I/O, I/B):	2"	120-240°F	REQUIRES "D"	62729P •
Instrument Set "OUTBOARD"	Contains: 62725P, 62722P, 62718P, 62730P			62714P •
Instrument Set "INBOARD/STERNDRIVE"	Contains: 62724P, 62722P, 62718P, 62730P, 62729P, 62720P			62715P •

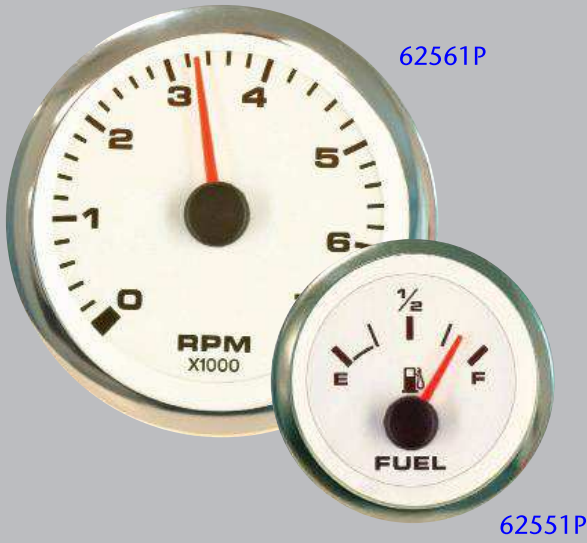
• Display Packaged Item

* Not tested for complete aftermarket ignition systems, will work with aftermarket replacement parts.

** Adapter (P/N 61886P) is required for Yamaha.

Use 4000 RPM tachometer or lower for diesel applications.

WHITE PREMIER PRO — Ideal for inboards, including diesels, Premier White features polished stainless steel bezels and clean white dials with modern black and blue graphics. When illuminated, black dial grads become red and pointer lights red. Automotive type light-piping and fog-resistant design combine for outstanding readability.



FEATURES:

- Full automotive type lighting, no “halo” around dial edges. When illuminated, black dial grads become red, pointer lights red.
- White dial, black graduations/numerals (metrics in blue), red pointer staff.
- Scratch resistant curved glass lenses, with polished stainless steel near-flush bezels.
- U.S. and metric scales, with ISO symbols, where appropriate.
- Optional add-on eyebrow or square bezels available (See Gauge Accessories for details).
- Fog-Resistant Design! Complies with SAE J-1810.

SELECTION GUIDE:

GAUGE DESCRIPTION	SIZE	DIAL RANGE	SENDER CODE	PART NUMBER
Fuel Gauge:	2"	E-1/2-F	REQUIRES "F"	62551P •
Hourmeter:	2"	10,000 Hrs.	NONE REQUIRED	62538P •
Oil Pressure Gauges (Electric):				
Oil Pressure 80 PSI	2"	0-80 PSI	REQUIRES "C"	62542P •
Oil Pressure 100 PSI	2"	0-100 PSI	REQUIRES "C"	62543P •
GPS Speedometer:				
35 MPH	3"	0-35 MPH	GPS RECEIVER	781-625-035P
60 MPH	3"	0-60 MPH	GPS RECEIVER	781-625-060P
80 MPH	3"	0-80 MPH	GPS RECEIVER	781-625-080P •
120 MPH	3"	0-120 MPH	GPS RECEIVER	781-625-120P
Speedometer Kits:				
65 MPH (Pitot type)	3"	10-65 MPH	INCLUDES "G"	62546P •
65 MPH (Pitot type) Head Only	3"	10-65 MPH		62546PH
Tachometer (Electric):				
O/B & 4-Stroke Gas Engines*	3"	0-7000 RPM	O/B ALT./COIL	62561P •
Tachometer/Hourmeter (Electric):				
O/B & 4-Stroke Gas Engines*	3"	0-7000 RPM	O/B ALT./COIL	62565P •
Tachometers (Electric):				
Diesel Alternator**	3"	0-4000 RPM	SEE "T"	62547P •
Diesel Magnetic Pickup, 90-180 Teeth	3"	0-4000 RPM	REQUIRES "B"	62548P
Trim Gauges (Outboard, I/O):				
Johnson/Evinrude (All) & Suzuki 4-Stroke 2002 & Up	2"	UP-DOWN	BY ENG. MFR	62550P •
Mercury O/B & I/O, Mariner, Force, Cobra, Volvo DP & SX, Yamaha 2001 & Up	2"	UP-DOWN	BY ENG. MFR	62549P •
Voltmeters-12 & 24 Volt:				
12 Volt System	2"	8-18 VDC	NONE REQ'D	62555P •
Water Temp. Gauge (I/O, I/B):	2"	120-240°F	REQUIRES "D"	62540P •
Water Pressure Kit, O/B	2"	40 PSI	INCLUDES "WP"	67657P •
Instrument Set "INBOARD/STERNDRIVE"	Contains: 62561P, 62546P, 62551P, 62555P, 62540P, 62542P			67654P •

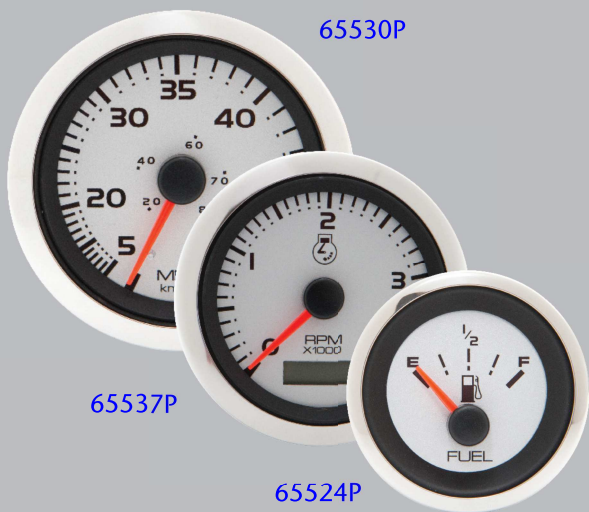
• Display Packaged Item

* Not tested for complete aftermarket ignition systems, will work with aftermarket replacement parts.

** May require alternator tap.

Use 4000 RPM tachometer or lower for diesel applications.

ARGENT PRO - Black graphics on a silver background, pointer has black hub with fade resistant acrylic orange staff. Pointer is internally illuminated for excellent night visibility. Dial graphics light red when illuminated and scratch resistant glass lens with fog-resistant design and polished stainless steel bezel.



FEATURES:

- Translucent dial as well as internally illuminated pointer staff, provides the best in night visibility.
- Easy to read black graphics on a silver dial background.
- Domed glass lenses are scratch resistant.
- Low profile bezels follow the curvature of the lens, with no 'lip' to trap and hold water.
- Optional add-on eyebrow or Square bezels available (See gauge accessories for details)

FOG RESISTANT GAUGE FEATURES:

- Fog-Resistant Design! Complies with SAE J-1810.

SELECTION GUIDE:

GAUGE DESCRIPTION	SIZE	DIAL RANGE	SENDER CODE	PART NUMBER
Fuel Gauge:	2"	E-1/2-F	REQUIRES "F"	65524P •
Oil Pressure Gauge (Electric):				
Oil Pressure 80 PSI	2"	0-80 PSI	REQUIRES "C"	65526P •
Oil Pressure 100 PSI	2"	0-80 PSI	REQUIRES "C"	65525P •
GPS Speedometer:				
60 MPH (Head Only)	3"	0-60 MPH	GPS RECEIVER	781-294-060P
Speedometer Kits:				
50 MPH (Pitot type)	3"	5-50 MPH	INCLUDES "G"	65529P •
50 MPH (Pitot type)	5"	5-50 MPH	INCLUDES "G"	65530P
70 MPH (Pitot type)	3"	20-70 MPH	INCLUDES "G"	65531P •
Tachometers (Electric):				
O/B & 4-Stroke Gas Engines*	3"	0-7000 RPM	O/B ALT./COIL	65535P •
O/B & 4-Stroke Gas Engines*	5"	0-7000 RPM	O/B ALT./COIL	65536P
Diesel Alternator*	3"	0-4000 RPM	O/B ALT./COIL	65537P •
Tachometer/Hourmeter (Electric):				
O/B & 4-Stroke Gas Engines*	3"	0-7000 RPM	O/B ALT./COIL	65545P •
Trim Gauges (Outboard, I/O):				
Johnson/Evinrude (All) & Suzuki 4-stroke 2002 & Up	2"	UP-DOWN	BY ENG. MFR	65547P •
Mercury O/B & I/O, Mariner, Force, Cobra, Volvo DP & SX, Yamaha 2001 & Up	2"	UP-DOWN	BY ENG. MFR	65548P •
Voltmeter-12 Volt:	2"	10-16 VDC	NONE REQUIRED	65550P •
Water Pressure Kit (Outboard):***				
Each kit includes fittings & 20 feet of tubing)	2"	30 PSI	INCLUDES "WP"	65551P •
Water Temp. Gauge (I/O) (Electric):	2"	120-240°F	REQUIRES "D"	65553P •

• Display Packaged Item

* Not tested for non-original-equipment (aftermarket) ignition systems.

*** Adapter (P/N 61886P) is required for Yamaha.

Use 4000 RPM tachometer or lower for diesel applications.



LIDO PRO - We have added a selection of fog resistant gauges to our hottest white dial line. Lido Pro features a crisp, white dial with a fire orange pointer tip. Red through-dial and white perimeter lighting provide great night readability. Coverage for popular OB and I/O applications - complete gauge kits available **.



FEATURES:

- White dial, black numerals, black pointer with fire-orange tip.
- Scratch resistant curved glass lenses, with polished stainless steel, near-flush bezels.
- U.S. and metric scales, with ISO symbols.
- Optional add-on eyebrow or square bezels available (See Gauge Accessories for details).
- White perimeter and red thru-dial lighting.

FOG RESISTANT GAUGE FEATURES:

- Fog-Resistant Design! Complies with SAE J-1810.

SELECTION GUIDE:

GAUGE DESCRIPTION	SIZE	DIAL RANGE	SENDER CODE	FOG RESISTANT
Fuel Gauge:	2"	E-1/2-F	REQUIRES "F"	59655P •
Hourmeter:	2"	10,000 Hrs.	NONE REQ'D	59416P •
Oil Pressure Gauges (Electric):				
Oil Pressure 80 PSI	2"	0-80 PSI	REQUIRES "C"	59653P •
GPS Speedometer:				
35 MPH	3"	0-35 MPH	GPS RECEIVER	781-310-035P
60 MPH	3"	0-60 MPH	GPS RECEIVER	781-310-060P
Speedometer Kits:				
50 MPH (Pitot type)	3"	10-50 MPH	INCLUDES "G"	61752FP •
65 MPH (Pitot type)	3"	10-65 MPH	INCLUDES "G"	59713P •
Tachometer (Electric):				
O/B & 4-Stroke Gas Engines*	3"	0-7000 RPM	O/B ALT./COIL	59737P •
Trim Gauges (Outboard, I/O):				
Mercury O/B & I/O, Mariner, Force, Cobra, Volvo DP & SX, Yamaha 2001 & Up	2"	UP-DOWN	BY ENG. MFR.	59657P •
Voltmeter-12 Volt:	2"	8-18 VDC	NONE REQ'D	59656P •
Water Pressure Kit (Outboard):***				
Each kit includes fittings and 20 feet of tubing)	2"	30 PSI	INCLUDES "WP"	63523P •
Water Temp. Gauge (I/O, I/B):	2"	120-240°F	REQUIRES "D"	59654P •
Instrument Set "OUTBOARD"	Contains: 59737P, 59713P, 59655P, 59656P			67669P •
Instrument Set "INBOARD/STERNDRIVE"	Contains: 59737P, 59713P, 59655P, 59656P, 59654P, 59653P			67653P •

- Display Packaged Item

* Not tested for complete aftermarket ignition systems, will work with aftermarket replacement parts.

*** Adapter (P/N 61886P) is required for Yamaha.
Use 4000 RPM tachometer or lower for diesel applications.



LIDO - Hottest selling white dial line! A comprehensive family of instruments for most engine types, Lido features crisp white dials and fire-orange pointer tips. Red through-dial and white perimeter lighting provide great night readability. Excellent inboard coverage with engine sync gauges* and diesel alternator and magnetic pickup tachometers**.

*Module required, not included with gauge. **Magnetic Pickup sender available separately.



FEATURES:

- White dial, black numerals, black pointer with fire-orange tip.
- Scratch resistant curved glass lenses, with polished stainless steel, near-flush bezels.
- U.S. and metric scales, with ISO symbols.
- Optional add-on eyebrow or square bezels available (See Gauge Accessories for details).
- White perimeter and red thru-dial lighting.
- Comprehensive line includes tachometers for diesel alternator and magnetic pickup PLUS synchronizer gauge (Suitable for gas or diesel engines with appropriate module. Module required, not included with gauge).

SELECTION GUIDE:

GAUGE DESCRIPTION	SIZE	DIAL RANGE	SENDER CODE	PART NUMBER
Engine Sync (gauge only)	2"	PORT-STBD.	REQUIRES "L"	65495P •
Fuel Gauge:	2"	E-1/2-F	REQUIRES "F"	65496P •
Hourmeter:	2"	10,000 Hrs.	NONE REQ'D	65497P •
Oil Pressure Gauges (Electric):				
Oil Pressure 80 PSI	2"	0-80 PSI	REQUIRES "C"	65501P •
Oil Pressure 100 PSI	2"	0-100 PSI	REQUIRES "C"	65498P •
Speedometer Kits:				
35 MPH (Pitot type)	3"	5-35 MPH	INCLUDES "G"	61751P
35 MPH (Pitot type) Head Only	3"	5-35 MPH		61751PH
50 MPH (Pitot type)	3"	10-50 MPH	INCLUDES "G"	61752P
50 MPH (Pitot type) Head Only	3"	10-50 MPH		61752PH
65 MPH (Pitot type)	3"	10-65 MPH	INCLUDES "G"	65510P •
80 MPH (Pitot type)	3"	20-80 MPH	INCLUDES "G"	65670P •
80 MPH (Pitot type) Head Only	3"	20-80 MPH		65670PH
Systems Check-Evinrude/Johnson:	2"	SYSTEM DATA	BY ENG. MFR.	65206SSP
Tachometer (Electric):				
O/B & 4-Stroke Gas Engines*	3"	0-7000 RPM	O/B ALT./COIL	65693P •
Systems Check – Evinrude/Johnson	3"	0-7000 RPM	O/B ALT./COIL	64477FP •
Tachometer/Hourmeters (Electric):				
O/B & 4-Stroke Gas Engines*	3"	0-7000 RPM	O/B ALT./COIL	65129P •
Diesel Alternator**	3"	0-4000 RPM	SEE "T"	65671P •
Diesel Magnetic Pickup, 90-180 Teeth	3"	0-4000 RPM	REQUIRES "B"	65692P •
Trim Gauges (Outboard, I/O):				
Johnson/Evinrude (All) & Suzuki	2"	UP-DOWN	BY ENG. MFR.	65502P •
4-stroke 2002 & Up	2"	UP-DOWN	BY ENG. MFR.	65503P
Honda	2"	UP-DOWN	BY ENG. MFR.	65503P
Mercury O/B & I/O, Mariner, Force, Cobra,	2"	UP-DOWN	BY ENG. MFR.	65504P •
Volvo DP & SX, Yamaha 2001 & Up	2"	UP-DOWN	BY ENG. MFR.	65505P •
Yamaha Outboards pre-2001	2"	UP-DOWN	BY ENG. MFR.	65505P •
Voltmeter-12 Volt:	2"	8-18 VDC	NONE REQ'D	65506P •
Water Pressure Kit (Outboard):***				
Each kit includes fittings and 20 feet of tubing)	2"	30 PSI	INCLUDES "WP"	65507P •
Water Temp. Kit (Outboard):***				
(For all electric-start outboards)	2"	COLD-HOT	INCLUDES "J"	65508P •
Water Temp. Gauge (I/O, I/B):	2"	120-240°F	REQUIRES "D"	65509P •

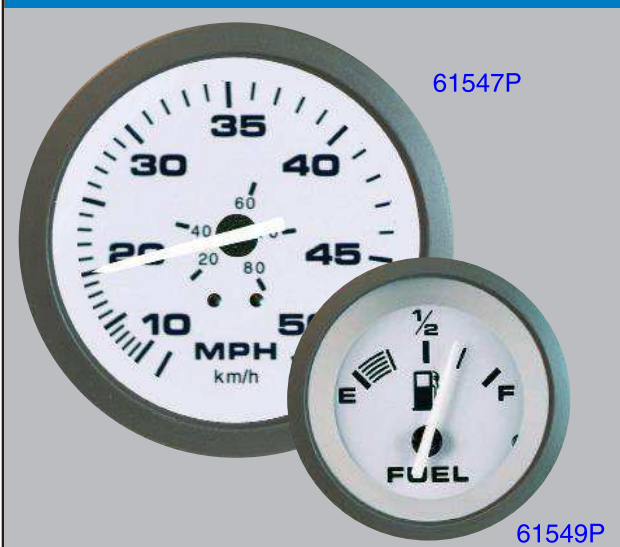
• Display Packaged Item

* Not tested for complete aftermarket ignition systems, will work with aftermarket replacement parts.

** May require alternator tap. *** Adapter (P/N 61886P) is required for Yamaha.

Use 4000 RPM tachometer or lower for diesel applications.

DRIFTWOOD - Features light gray dials, clean black numerals and a black pointer hub with white staff. These instruments lend a sophisticated look to any dash. Combination blue through-dial and white perimeter lighting are included for excellent readability at night.



FEATURES:

- Light gray dial, black graduations/numerals, white pointer staff.
- Scratch resistant curved glass lenses, with black, near-flush bezels.
- White perimeter and blue thru-dial lighting.
- U.S. and metric scales, with ISO symbols, where appropriate.
- Optional add-on eyebrow or square bezels available (See Gauge Accessories for details).

SELECTION GUIDE:

GAUGE DESCRIPTION	SIZE	DIAL RANGE	SENDER CODE	PART NUMBER
Fuel Gauge:	2"	E-1/2-F	REQUIRES "F"	61549P •
Hourmeter:	2"	10,000 Hrs.	NONE REQ'D	62952P •
Oil Pressure Gauge (Electric):	2"	0-80 PSI	REQUIRES "C"	61550P •
Speedometer Kits:				
50 MPH (Pitot type)	3"	10-50 MPH	INCLUDES "G"	61547P •
Tachometer (Electric):				
O/B & 4-Stroke Gas Engines*	3"	0-7000 RPM	O/B ALT./COIL	61546P •
Trim Gauges (Outboard, I/O):				
Honda	2"	UP-DOWN	BY ENG. MFR.	62375P
Mercury O/B & I/O, Mariner, Force, Cobra, Volvo DP & SX, Yamaha 2001 & Up	2"	UP-DOWN	BY ENG. MFR.	61551P •
Voltmeter-12 Volt:	2"	8-18 VDC	NONE REQ'D	61548P •
Water Pressure Kit (Outboard):** (Kit includes fittings/20 feet of tubing)	2"	30 PSI	INCLUDES "WP"	62960P •
Water Temp. Gauge (I/O, I/B):	2"	100-220°F	REQUIRES "D"	61552P •

• Display Packaged Item

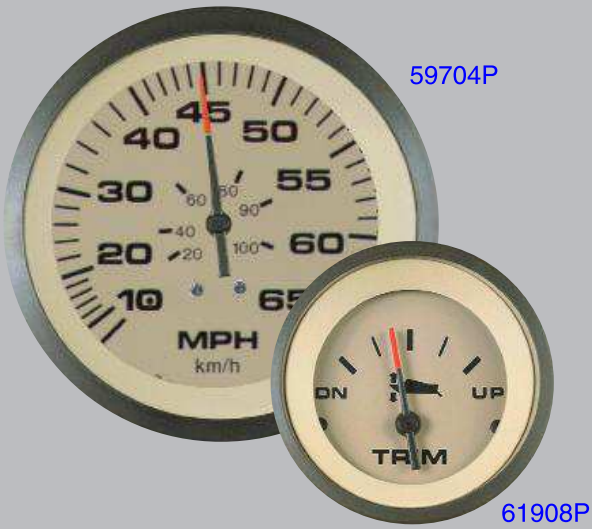
* Not tested for complete aftermarket ignition systems, will work with aftermarket replacement parts.

** Adapter (P/N 61886P) is required for Yamaha.

Use 4000 RPM tachometer or lower for diesel applications.



SAHARA - With crisp tan dials and fire-orange pointer tip, Sahara gives any dash the elegant OEM look. Combined red through-dial and white perimeter lighting provide great night readability. These aren't merely "close enough" — they're the real thing!



FEATURES:

- Tan dial and retainer, black graduations and numerals, black pointer with fire-orange tip.
- Scratch resistant curved glass lenses, with black matte, near-flush bezels.
- White perimeter and red thru-dial lighting.
- U.S. and metric scales, with ISO symbols, where appropriate.
- Optional add-on eyebrow or square bezels available (See Gauge Accessories for details).

SELECTION GUIDE:

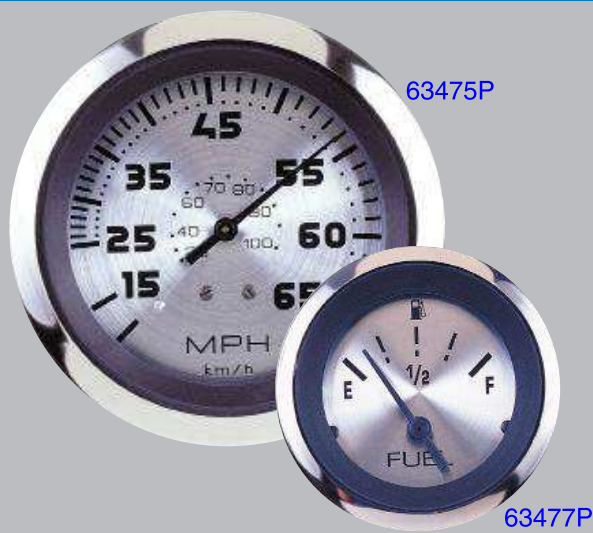
GAUGE DESCRIPTION	SIZE	DIAL RANGE	SENDER CODE	PART NUMBER
Fuel Gauge:	2"	E-1/2-F	REQUIRES "F"	59707P •
Oil Pressure Gauge (Electric):	2"	0-80 PSI	REQUIRES "C"	59705P •
Speedometer Kits:				
35 MPH (Pitot type)	3"	5-35 MPH	INCLUDES "G"	61826P •
35 MPH (Pitot type) Head Only	3"	5-35 MPH		61826PH
50 MPH (Pitot type)	3"	10-50 MPH	INCLUDES "G"	61163P •
65 MPH (Pitot type)	3"	10-65 MPH	INCLUDES "G"	59704P •
65 MPH (Pitot type) Head Only	3"	10-65 MPH		59704PH
80 MPH (Pitot type)	3"	20-80 MPH	INCLUDES "G"	63076P •
80 MPH (Pitot type) Head Only	3"	20-80 MPH		63076PH
Systems Check – Evinrude/Johnson:	2"	SYSTEM DATA	BY ENG. MFR.	66956P
Tachometer (Electric):				
O/B & 4-Stroke Gas Engines*	3"	0-7000 RPM	O/B ALT./COIL	59703P •
Systems Check – Evinrude/Johnson	3"	0-7000 RPM	O/B ALT./COIL	61901P •
Tach/Hourmeter 0-7000 RPM	3"	0-7000 RPM	O/B ALT./Coil	69743P •
Trim Gauges (Outboard, I/O):				
Johnson/Evinrude (All) & Suzuki				
4-stroke 2002 & Up	2"	UP-DOWN	BY ENG. MFR.	61908P •
Honda	2"	UP-DOWN	BY ENG. MFR.	62369P
Mercury O/B & I/O, Mariner, Force, Cobra, Volvo DP & SX, Yamaha 2001 & Up	2"	UP-DOWN	BY ENG. MFR.	59709P •
Voltmeter-12 Volt:	2"	8-18 VDC	NONE REQ'D	59708P •
Water Pressure Kits (Outboard):** (Each kit includes fittings and 20 feet of tubing)	2"	40 PSI	INCLUDES "WP"	69870P •
Water Temp. Gauge (I/O, I/B):	2"	120-240°F	REQUIRES "D"	59706P •
Instrument Set "OUTBOARD"	Contains: 59703P, 59704P, 59707P, 59708P			65481P •
Instrument Set "INBOARD/STERNDRIVE"	Contains: 59703P, 59704P, 59707P, 59708P, 59706P, 59705P			65485P •
Twin Engine Add On IB/IOGauge Kit	Contains: 59703P, 59708P, 59706P, 59705P			69717P
Twin Engine Add On OBGauge Kit	Contains: 59703P, 59708P			69716P
Instrument Set OB w/Tach/Hr	Contains: 69743P, 59704P, 59707P, 59708P			69703P •
Instrument Set IB/IO w/Tach/Hr	Contains: 69743P, 59704P, 59707P, 59708P, 59706P, 59705P			69704P •

• Display Packaged Item

* Not tested for complete aftermarket ignition systems, will work with aftermarket replacement parts.

** Adapter (P/N 61886P) is required for Yamaha.
Use 4000 RPM tachometer or lower for diesel applications.

STERLING - Ideal for outboards and stern drives! With stainless steel bezels, brushed aluminum dials and black pointers, Sterling instruments give a bright, gleaming look to any dash. Perimeter lighting provided for night operation.



FEATURES:

- Brushed aluminum dial, black graduations/numerals, black pointer.
- Scratch resistant curved glass lenses, with polished stainless steel, near-flush bezels.
- Perimeter lighting.
- U.S. and metric scales, with ISO symbols, where appropriate.
- Optional add-on eyebrow or square bezels available (See Gauge Accessories for details).

SELECTION GUIDE:

GAUGE DESCRIPTION	SIZE	DIAL RANGE	SENDER CODE	PART NUMBER
Fuel Gauge:	2"	E-1/2-F	REQUIRES "F"	63477P •
Oil Pressure Gauge (Electric):	2"	0-80 PSI	REQUIRES "C"	63479P •
Speedometer Kits:				
65 MPH (Pitot type)	3"	10-65 MPH	INCLUDES "G"	63475P •
65 MPH (Pitot type) Head Only	3"	10-65 MPH		63475PH
80 MPH (Pitot type)	3"	20-80 MPH	INCLUDES "G"	63476P •
80 MPH (Pitot type) Head Only	3"	20-80 MPH		63476PH
Systems Check – Evinrude/Johnson:	2"	SYSTEM DATA	BY ENG. MFR.	63585P •
Tachometer (Electric):				
O/B & 4-Stroke Gas Engines*	3"	0-7000 RPM	O/B ALT./COIL	63473P •
Tachometer/Hourmeter (Electric):				
O/B & 4-Stroke Gas Engines*	3"	0-7000 RPM	O/B ALT./COIL	63474P •
Trim Gauges (Outboard, I/O):				
Honda	2"	UP-DOWN	BY ENG. MFR.	64475P
Johnson/Evinrude (All) & Suzuki				
4-stroke 2002 & Up	2"	UP-DOWN	BY ENG. MFR.	63483P •
Mercury O/B & I/O, Mariner, Force, Cobra,				
Volvo DP & SX, Yamaha 2001 & Up	2"	UP-DOWN	BY ENG. MFR.	63482P •
Voltmeter-12 Volt:	2"	8-18 VDC	NONE REQ'D	63478P •
Water Pressure Kit (Outboard):**				
(Kit includes fittings/20 feet of tubing)	2"	30 PSI	INCLUDES "WP"	63481P •
Water Temp. Gauge (I/O, I/B):	2"	120-240°F	REQUIRES "D"	63480P •

• Display Packaged Item

* Not tested for complete aftermarket ignition systems, will work with aftermarket replacement parts.

** Adapter (P/N 61886P) is required for Yamaha.
Use 4000 RPM tachometer or lower for diesel applications.

BLACK STERLING - With its rich luster and polish, Black Sterling instruments convey a look of utmost sophistication and add elegance to any dash. These instruments have fire-orange pointer tips and stainless graphics for a contemporary, ultra stylish look. Black Sterling instruments have clean, crisp black dials which highlight the stainless accents.



FEATURES:

- Scratch-resistant domed glass lens.
- Perimeter lit dial.
- Elite stainless steel bezel.
- Black pointer with fire orange tip.
- White graphics and black background on spun aluminum dial.
- Optional add-on eyebrow or square bezels available (See Gauge Accessories for details).
- Fits most stern drive and outboard applications.
- US and Metric scales where appropriate.

MULTI-GAUGE FEATURES:

- Combines 2 gauges in one.
- Saves dash space.
- Fog-Resistant Design! Complies with SAE J-1810.

SELECTION GUIDE:

GAUGE DESCRIPTION	SIZE	DIAL RANGE	SENDER CODE	PART NUMBER
Fuel Gauge	2"	E-1/2-F	REQUIRES "F"	67021P •
Voltmeter	2"	8-18 VDC	NONE REQ'D	67019P •
Water Temperature (Electric)	2"	100-240°F	REQUIRES "D"	67020P •
Oil Pressure (Electric)	2"	0-80 PSI	REQUIRES "C"	67022P •
50 MPH Speedometer	3"	0-50 MPH	INCLUDES "G"	68960P •
50 MPH Speedometer (Head Only)	3"	0-50 MPH		68960PH
70 MPH Speedometer Kit	3"	0-70 MPH	INCLUDES "G"	67285P •
Tachometer: O/B & 4 Cycle Gas	3"	0-7000 RPM	O/B ALT./COIL	67363P •
Tach/LCD Hr, O/B & 4 Cycle Gas	3"	0-7000 RPM	O/B ALT./COIL	67364P •
Trim: Honda	2"	UP-DOWN	BY ENG. MFR.	67855P
Trim: Mercury O/B & I/O, Mariner, Force, Cobra, Volvo DP & SX, Yamaha 2001 & Up	2"	UP-DOWN	BY ENG. MFR.	67023P •
Trim: Johnson/Evinrude (All) & Suzuki 4-stroke 2002 & Up	2"	UP-DOWN	BY ENG. MFR.	67365P •
O/B Water Pressure Kit	2"	0-40 PSI	INCLUDES "WP"	67382P •
MULTI-GAUGE DESCRIPTION	SIZE	DIAL RANGE	SENDER CODE	PART NUMBER
Speedo/Fuel	3"	0-50 MPH E-1/2-F	REQUIRES "G" REQUIRES "F"	69073FP •
Tach/Volt	3"	0-7000 RMP 8-18 VDC	O/B ALT./COIL NONE REQ'D	69074FP •

• Display Packaged Item

* Not tested for complete aftermarket ignition systems, will work with aftermarket replacement parts.

** Adapter (P/N 61886P) is required for Yamaha.
Use 4000 RPM tachometer or lower for diesel applications.

AMEGA - Hottest selling black dial line! Amega® Domed has clean-looking black dials with white and red graphics plus through-dial and perimeter lighting for great readability. Amega has been very popular, available in several styles since its debut in 1986.



FEATURES:

- Black dial, red graduations, white numerals, vivid white pointer staff.
- Scratch resistant curved glass lenses, with black, near-flush bezels.
- U.S. and metric scales, with ISO symbols, where appropriate.
- Perimeter and thru-dial lighting.
- A comprehensive array of outboard water pressure instrument kits.
- Optional add-on eyebrow or square bezels available (See Gauge Accessories for details).

SELECTION GUIDE:

GAUGE DESCRIPTION	SIZE	DIAL RANGE	SENDER CODE	PART NUMBER
Fuel Gauge:	2"	E-1/2-F	REQUIRES "F"	57902P •
Hourmeter:	2"	10,000 Hrs.	NONE REQ'D	84760P •
Oil Pressure Gauges (Electric):				
Oil Pressure 80 PSI	2"	0-80 PSI	REQUIRES "C"	57903P •
Oil Pressure 100 PSI	2"	0-100 PSI	REQUIRES "C"	57929P •
GPS Speedometer:				
35 MPH	3"	0-35 MPH	GPS RECEIVER	781-579-035P
60 MPH	3"	0-60 MPH	GPS RECEIVER	781-579-060P
80 MPH	3"	0-80 MPH	GPS RECEIVER	781-579-080P •
Speedometer Kits:				
35 MPH (Pitot type)	3"	5-35 MPH	INCLUDES "G"	58342P •
35 MPH (Pitot type) Head Only	3"	5-35 MPH		58342PH
50 MPH (Pitot type)	3"	10-50 MPH	INCLUDES "G"	57898P •
50 MPH (Pitot type) Head Only	3"	10-50 MPH		57898PH
65 MPH (Pitot type)	3"	10-65 MPH	INCLUDES "G"	57900P •
65 MPH (Pitot type) Head Only	3"	10-65 MPH		57900PH
80 MPH (Pitot type)	3"	20-80 MPH	INCLUDES "G"	57899P •
80 MPH (Pitot type) Head Only	3"	20-80 MPH		57899PH
Systems Check – Evinrude/Johnson:	2"	SYSTEM DATA	BY ENG. MFR.	65205P •
Tachometer (Electric):				
O/B & 4-Stroke Gas Engines*	3"	0-7000 RPM	O/B ALT./COIL	58255P •
Systems Check – Evinrude/Johnson	3"	0-7000 RPM	O/B ALT./COIL	58935P •
Diesel Alt	3"	0-4000 RPM	ALTERNATOR	68358P •
Force	3"	0-7000 RPM		69044P •
Tachometer/Hourmeter (Electric):				
O/B & 4-Stroke Gas Engines*	3"	0-6000 RPM	O/B ALT./COIL	57897P •
Tach/Hourmeter	3"	0-7000		68443P •
Trim Gauges (Outboard, I/O):				
Johnson/Evinrude (All) & Suzuki	2"	UP-DOWN	BY ENG. MFR.	58431P •
4-stroke 2002 & Up	2"	UP-DOWN	BY ENG. MFR.	68359P
Honda	2"	UP-DOWN	BY ENG. MFR.	57905P •
Mercury O/B & I/O, Mariner, Force,	2"	UP-DOWN	BY ENG. MFR.	61748P •
Cobra, Volvo DP & SX, Yamaha 2001 & Up	2"	UP-DOWN	BY ENG. MFR.	57901P •
Yamaha Outboards pre-2001	2"	UP-DOWN	NONE REQ'D	57901P •
Voltmeter-12 Volt:	2"	8-18 VDC	NONE REQ'D	57901P •
Water Pressure Kits (Outboard):**	2"	40 PSI	INCLUDES "WP"	68357P •
(Each kit includes fittings and 20 feet of tubing)	2"	30 PSI	INCLUDES "WP"	61238P •
Water Temp. Kit (Outboard):**				
(For all electric-start outboards)	2"	100-220°F	INCLUDES "J"	58862P •
Water Temp. Gauge (I/O, I/B):	2"	120-240°F	REQUIRES "D"	57904P •
Ammeter, Amega 60-0-60	2"	60-0-60	NONE REQ'D	68356P •
Battery Condition Indicator, 12 VDC			NONE REQ'D	68361P •
Instrument Set "OUTBOARD"	Contains: 58255P, 57900P, 57902P, 57901P			68362P •
Instrument Set "INBOARD/STERNDRIVE"	Contains: 58255P, 57900P, 57902P, 57901P, 57904P, 57903P			68363P •
Twin Engine Add On IB/IO Gauge Kit	Contains: 58255P, 57901P, 57904P, 57903P			69722P
Twin Engine Add On OB Gauge Kit	Contains: 58255P, 57901P			69721P
Instrument Set OB w/Tach/Hr	Contains: 68443P, 57900P, 57902P, 57901P			69708P •
Instrument Set IB/IO w/Tach/Hr	Contains: 68443P, 57900P, 57902P, 57901P, 57904P, 57903P			69709P •

• Display Packaged Item

* Not tested for complete aftermarket ignition systems, will work with aftermarket replacement parts.

** Adapter (P/N 61886P) is required for Yamaha.

Use 4000 RPM tachometer or lower for diesel applications.

ARCTIC - Stylish white bezel design, black on white graphics, accurate and reliable, these tough instruments look good on all types of boats. Domed glass sheds water and resists scratching.



FEATURES:

- Instruments available for most outboards, stern drives and gasoline-powered inboards.
- Scratch-resistant domed glass lenses.
- Enhanced illumination: through-dial and perimeter lighting for excellent readability at night.
- Low-range speedometers.
- U.S. and metric scales, with ISO symbols, where appropriate.
- Optional add-on eyebrow or square bezels available (See Gauge Accessories for details).

SELECTION GUIDE:

GAUGE DESCRIPTION	SIZE	DIAL RANGE	SENDER CODE	PART NUMBER
Ammeter	2"	60-0-60	NONE REQ'D	68364P •
Fuel Gauge	2"	(E-F)	REQUIRES "F"	68365P •
Hourmeter	2"	10,000 hrs		68366P •
Eng Oil Pressure gauge 0-80 PSI	2"	0-80 PSI	REQUIRES "C"	68367P •
Water Pressure Kits (Outboard): (Each kit includes fittings and 20 feet of tubing).	2"	0-40 PSI	INCLUDES "WP"	68369P •
GPS Speedometer:				
35 MPH	3"	0-35 MPH	GPS RECEIVER	781-683-035P
60 MPH	3"	0-60 MPH	GPS RECEIVER	781-683-060P
80 MPH	3"	0-80 MPH	GPS RECEIVER	781-683-080P •
Speedo Kit 0-35 mph (inc Pitot and Hose)	3"	5-35 MPH	INCLUDES "G"	68370P •
Speedo Kit 0-65 mph (inc Pitot and Hose)	3"	10-65 MPH	INCLUDES "G"	68371P •
Speedo Kit 0-80 mph (inc Pitot and Hose)	3"	20-80 MPH	INCLUDES "G"	68372P •
Tachometer 0-4000 RPM Diesel Alt	3"	0-4000 RPM	ALTERNATOR	68373P •
Tachometer 0-7000 RPM	3"	0-7000 RPM	O/B ALT./COIL	68374P •
Tach/Hourmeter 0-7000 RPM Petrol/Gas	3"	0-7000 RPM	O/B ALT./COIL	68375P •
I/O, I/B Water Temp Gauge	2"	120-240°F	REQUIRES "D"	68376P •
Outboard Water Temp Kit (Cold-Hot)	2"	100-220°F	INCLUDES "J"	68377P •
Trim, Johnson/Evinrude (All) & Suzuki 4-stroke 2002 & Up	2"	UP-DOWN	BY ENG. MFR.	68378P •
Trim, Honda	2"	UP-DOWN	BY ENG. MFR.	68379P
Trim, Mercury O/B & I/O, Mariner, Force, Cobra, Volvo DP & SX, Yamaha 2001 & Up	2"	UP-DOWN	BY ENG. MFR.	68380P •
Trim, Yamaha Outboards pre-2001	2"	UP-DOWN	BY ENG. MFR.	68381P •
12v Voltmeter, 8-18 Volts	2"	8-18 VDC	NONE REQ'D	68383P •
12 Battery Condition Indicator	2"		NONE REQ'D	68384P •
System Check - Evinrude/Johnson	2"		BY ENG. MFR.	68385P •
Instrument Set "OUTBOARD"	Contains: 68374P, 68371P, 68365P, 68383P			68387P •
Instrument Set "INBOARD/STERNDRIVE"	Contains: 68374P, 68371P, 68365P, 68383P, 68376P, 68367P			68388P •
Instrument Set OB w/Tach/Hr	Contains: 68375P, 68371P, 68365P, 68383P			69710P •
Instrument Set IB/IO w/Tach/Hr	Contains: 68375P, 68371P, 68365P, 68383P, 68376P, 68367P			69711P •
Twin Engine Add On IB/IO Gauge Kit	Contains: 68374P, 68383P, 68376P, 68367P			69724P
Twin Engine Add On OB Gauge Kit	Contains: 68374P, 68383P			69723P

• Display Packaged Item

* Not tested for complete aftermarket ignition systems, will work with aftermarket replacement parts.

** Adapter (P/N 61886P) is required for Yamaha.

Use 4000 RPM tachometer or lower for diesel applications.

ECLIPSE - Smart white and blue graphics on a black dial background, these very low profile bezels follow the curve of the lense to eliminate water trapping. Design with domed glass sheds water and resists scratching.



FEATURES:

- Instruments available for most outboards, stern drives and gasoline-powered inboards.
- Scratch-resistant domed glass lenses.
- Perimeter lighting for excellent readability at night.
- U.S. and metric scales, with ISO symbols, where appropriate.
- Optional add-on eyebrow or square bezels available (See Gauge Accessories for details).

SELECTION GUIDE:

GAUGE DESCRIPTION	SIZE	DIAL RANGE	SENDER CODE	PART NUMBER
Ammeter	2"	60-0-60	NONE REQ'D	68389P •
Fuel Gauge	2"	(E-F)	REQUIRES "F"	68390P •
Hourmeter	2"	10,000 hrs		68391P •
Eng Oil Pressure gauge 0-80 PSI	2"	0-80 PSI	REQUIRES "C"	68392P •
Eng Oil Pressure gauge 0-100 PSI	2"	0-100 PSI	REQUIRES "C"	68393P •
Water Pressure Kits (Outboard): (Each kit includes fittings and 20 feet of tubing).	2"	0-40 PSI	INCLUDES "WP"	68394P •
GPS Speedometer:				
35 MPH	3"	0-35 MPH	GPS RECEIVER	781-684-035P
60 MPH	3"	0-60 MPH	GPS RECEIVER	781-684-060P
80 MPH	3"	0-80 MPH	GPS RECEIVER	781-684-080P •
Speedo Kit 0-35 mph (inc Pitot and Hose)	3"	5-35 MPH	INCLUDES "G"	68395P •
Speedo Kit 0-65 mph (inc Pitot and Hose)	3"	10-65 MPH	INCLUDES "G"	68396P •
Speedo Kit 0-80 mph (inc Pitot and Hose)	3"	20-80 MPH	INCLUDES "G"	68397P •
Tachometer 0-4000 RPM Diesel Alt	3"	0-4000 RPM	ALTERNATOR	68398P •
Tachometer 0-7000 RPM	3"	0-7000 RPM	O/B ALT./COIL	68399P •
Tach/Hourmeter 0-7000 RPM Petrol/Gas	3"	0-7000 RPM	O/B ALT./COIL	68400P •
I/O, I/B Water Temp Gauge	2"	120-240°F	REQUIRES "D"	68401P •
Outboard Water Temp Kit (Cold-Hot) - includes "J"	2"	100-220°F	INCLUDES "J"	68402P •
Trim, Johnson/Evinrude (All) & Suzuki 4-stroke 2002 & Up	2"	UP-DOWN	BY ENG. MFR.	68403P •
Trim, Honda	2"	UP-DOWN	BY ENG. MFR.	68404P
Trim, Mercury O/B & I/O, Mariner, Force, Cobra, Volvo DP & SX, Yamaha 2001 & Up	2"	UP-DOWN	BY ENG. MFR.	68405P •
Trim, Yamaha Outboards pre-2001	2"	UP-DOWN	BY ENG. MFR.	68406P •
12v Voltmeter, 8-18 Volts	2"	8-18 VDC	NONE REQ'D.	68408P •
12v Battery Condition Indicator	2"		NONE REQ'D.	68409P •
System Check - Evinrude/Johnson	2"		BY ENG. MFR.	68410P •
Instrument Set "OUTBOARD"	Contains: 68399P, 68396P, 68390P, 68408P			68412P •
Instrument Set "INBOARD/STERNDRIVE"	Contains: 68399P, 68396P, 68390P, 68408P, 68401P, 68392P			68413P •
Twin Engine Add On IB/IO Gauge Kit	Contains: 68399P, 68408P, 68401P, 68392P			69726P
Twin Engine Add On OB Gauge Kit	Contains: 68399P, 68408P			69725P
Instrument Set OB w/Tach/Hr	Contains: 68400P, 68396P, 68390P, 68408P			69712P •
Instrument Set IB/IO w/Tach/Hr	Contains: 68400P, 68396P, 68390P, 68408P, 68401P, 68392P			69713P •

• Display Packaged Item

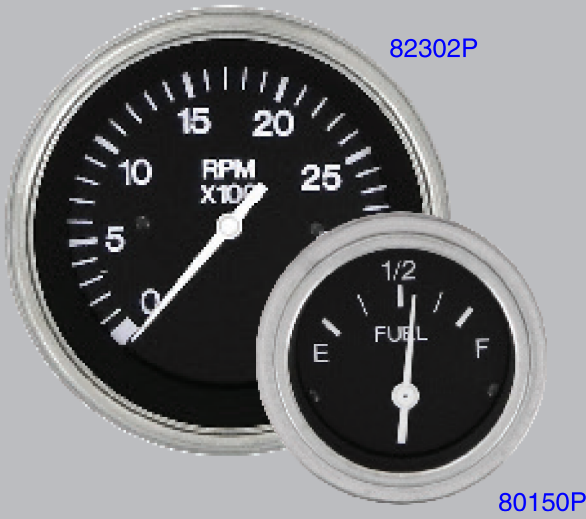
* Not tested for complete aftermarket ignition systems, will work with aftermarket replacement parts.

** Adapter (P/N 61886P) is required for Yamaha.

Use 4000 RPM tachometer or lower for diesel applications.

HEAVY DUTY - A classic line for inboards including diesels, Heavy Duty includes mechanical water temperature and oil pressure gauges, ammeters, engine sync gauges* and a range of diesel tachometers, including a programmable tach/hourmeter.

*Module required, not included with gauge.



FEATURES:

- Classic white graphics and pointer on deep black faces.
- Low-profile polished stainless steel bezels.
- Perimeter lighting and scratch resistant glass lenses.
- Tachometers for diesels available.
- Several temperature and mechanical oil pressure gauges available.
- Programmable tach/hourmeter offered.
- Ideal replacement for Stewart-Warner® “Deluxe” instruments.
- Optional add-on eyebrow or square bezels available (See Gauge Accessories for details).

SELECTION GUIDE:

GAUGE DESCRIPTION	SIZE	DIAL RANGE	SENDER CODE	PART NUMBER
Ammeters:				
Direct Reading 40 Amp Range	2"	40-0-40A	NONE REQ'D.	80712P
Direct Reading 60 Amp Range	2"	60-0-60A	NONE REQ'D.	80710P •
Engine Synchronizer Gauge:	2"	Port-Starboard	REQUIRES "L"	80730P •
Fuel Gauge:	2"	E-1/2-F	REQUIRES "F"	80150P •
Hourmeter:	2"	10,000 Hrs.	NONE REQ'D.	82760P •
Oil Pressure Gauges (Electric):				
Oil Pressure 80 PSI	2"	0-80 PSI	REQUIRES "C"	80180P •
Oil Pressure 100 PSI	2"	0-100 PSI	REQUIRES "C"	80181P •
Oil Temperature Gauge (Electric):				
Oil Temperature 320°F	2"	140-320°F	REQUIRES "E"	80596P
Speedometer Kits:				
60 MPH (Pitot Type)	3"	10-60 MPH	INCLUDES "G"	80514P •
60 MPH (Pitot Type) Head Only	3"	10-60 MPH		80514PH
Tachometers (Electric):				
Diesel Alternator**	3"	0-3500 RPM	SEE "T"	82302P •
Diesel Magnetic Pickup, 90-180 Teeth	3"	0-3500 RPM	REQUIRES "B"	82303P •
Diesel Signaflex ***	3"	0-3500 RPM	SIGNAFLEX	82301P
O/B & 4-Stroke Gas Engines*	3"	0-6000 RPM	O/B ALT./COIL	82288P •
Water Temp. Gauges (Electric):				
Water Temp 240°F	2"	120-240°F	REQUIRES "D"	80590P •
Water Temp 280°F, Nylon	2"	100-280°F	REQUIRES "P"	80593P
Voltmeters - 12 & 24 Volt:				
12 Volt System	2"	10-16 VDC	NONE REQ'D.	80134P •
24 Volt System	2"	20-32 VDC	NONE REQ'D.	80131P •

• Display Packaged Item

* Not tested for complete aftermarket ignition systems, will work with aftermarket replacement parts.

** May require alternator tap.

*** Signaflex senders and drive tips are for domestic diesel engines only (not for Lehman, Renault, Volvo, Yanmar, etc.)

Use 4000 RPM tachometer or lower for diesel applications.



MARINE OIL PRESSURE AND TEMPERATURE SENDER INTERCHANGE



Illustration A
Oil Pressure Switch



Illustration B
Oil Pressure Sender



Illustration C
Temperature Sender



Illustration D
Temperature Switch



Illustration E
Safety Shut-Off Switch

PART NO.	Stewart Warner Part No.	Faria Part No.	Medallion Part No.	Datcon Part No.	VDO Part No.	Crusader Part No.	Mercruiser Part No.	Volvo Part No.	BRP Part No.	VeeThree Part No.	Range	N.P.T. Thread Size	Terminal Type
OIL PRESSURE SWITCHES (ILLUSTRATION A)													
OP22900 •	364L-F										6 psi Trip	1/8-27	10-32 stud
OP22891	364K-F										15 psi Trip	1/8-27	10-32 stud
18-5894								3852215	0379948		9 psi Trip	1/8-27	Spade
OIL PRESSURE SENDERS (ILLUSTRATION B) - Code C													
18-5899	279-A	90512	A-2547	02504-00	360 801	700425	815425T	3857532	982650	IA15001	80 psi	1/8-27	10-32 stud
OP24301	279B-F	90519	A-2547-1	02505-00	360 811		850362			IA15016	100 psi	1/8-27	10-32 stud
OP24891	82514	90511	A-2622	02504-01				872064		IA15003	80 psi DS	1/8-27	10-32 stud
TEMPERATURE SWITCHES (ILLUSTRATION D)													
TS25101	83304				232011017088						200 Trip	3/8-18	1/4" blade
TEMPERATURE SENDERS (ILLUSTRATION C) - Code D													
18-5896	362CZ-D	90401	B-936							52320S010	240°	1/8-27	10-32 stud
TS26611	362AN-D	90402	B-936-1							52320S004	240°	1/4-18	10-32 stud
TS26621	362AJ-D	90403	B-936-2				97257A 1			52320S009	240°	3/8-18	10-32 stud
TS26631	362AH-D	90404	B-936-3			700427	97258A 1		171960	52320S003	240°	1/2-14	10-32 stud
TS26641		90406	B-936	02017	323094						240° DS	1/8-27	10-32 stud
TS26651	362BD-D		A-2618-2								240° DS	1/4-18	10-32 stud
18-5897	352BC-D		A-2618-3					872068		52320S018	240° DS	3/8-18	10-32 stud
18-5898	362BB-D		A-2618-4							52320S017	240° DS	1/2-14	10-32 stud
18-7513								3862500			239°	1/8-27	
OIL PRESSURE SAFETY SHUT-OFF SWITCH (ILLUSTRATION E)													
*OP72533												1/4-18	1/4" spade

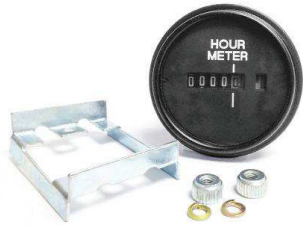
• Retail Packaged Item

***Note: DS specifies Dual Station sender**

***3-wire hookup to starter, pump and ignition. I/O and inboard units require a method to shut off the electronic fuel pump when the engine fails or is shut down. This switch senses low oil pressure and shuts the fuel pump off.**

HOURMETERS

DISPLAY PACKAGE



56966P
HOURMETER, ROUND
(2")

DISPLAY PACKAGE



56967P
HOURMETER, RECT.
(Hole Size: 1.5" x 1")
Outside dimensions: 2.1" x 1.2"

DISPLAY PACKAGE



56968P
SMALL ENGINE HOURMETER (W/ 5' SENSOR WIRE)

Replaces: Yamaha ENG-METER-2C-01
2 or 4 Stroke Gasoline
• No power or ground required

DISPLAY PACKAGE



56969P
SMALL ENGINE TACH/HOURMETER (W/ 5' SENSOR WIRE)
Fits: 2 or 4 stroke, 2 Cylinders or Less
-No power or ground required

GAUGE ACCESSORIES

BEZELS

EYEBROW BEZELS - Our Eyebrow Bezels give any boat that sporty race boat look. Durable and corrosion proof, these chrome plated bezels attach directly to the gauge. The bezels can be rotated to any angle allowing you to customize the look of your dash.



FEATURES:

- Directly attach to the gauge
- No extra holes to drill
- Can be set at any angle
- Corrosion proof ABC/PVC construction
- Buy individually or in 4 or 6 gauge sets.

69380P
BEZEL KIT
For: 4 Gauge Kit

Contains:
69268P (x2) and 69269P (x2)



69381P
BEZEL KIT
For: 6 Gauge Kit

Contains:
69268P (x4) and 69269P (x2)



69268P
EYEBROW BEZEL
(2")



69269P
EYEBROW BEZEL (3")
3 3/8" I.D.



69270P
EYEBROW BEZEL
(5")



IA65476
ACCESSORY, AIRCRAFT BEZEL
(2")



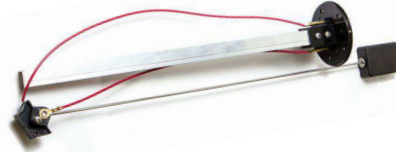
IA65477
ACCESSORY, AIRCRAFT BEZEL (3")
3 3/8" I.D.

FUEL SENDERS (CODE F): 240-33 OHM RANGE



DISPLAY PACKAGE

56948P
FUEL SENDER KIT (W/GAUGE)
 4-24" Tank

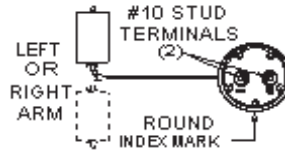
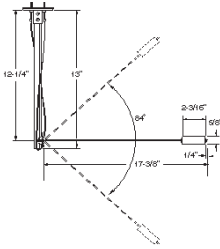


DISPLAY PACKAGE

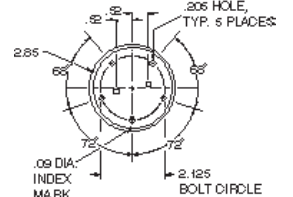
90424P
FUEL SENDER
 4-24" tank depth



64082
FUEL SENDER GASKET



FLANGE MOUNTING DETAIL:



(Bend float arm as shown above for tanks less than 6" deep).

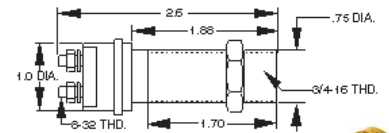
TACHOMETER ACCESSORIES (CODE B)



IH14767
TACH HARNESS
 For: Evinrude/Johnson



IH15105
TACH HARNESS
 For: Mariner/Merc O/B



1507678P
MAGNETIC PROXIMITY SENDER



SPEEDOMETER SENDERS AND ACCESSORIES (CODE G)

DISPLAY PACKAGE



56973P
PITOT
 For: 30-80 mph Speedometers

DISPLAY PACKAGE



59677P
PACK O'PITOTS
 (Package of 12)

DISPLAY PACKAGE



67437P
PITOT HOSE KIT (W/ HARDWARE)
 • 25' of hose
 0.150" I.D. • 0.250" O.D.



56353P
PITOT TUBING
 For: 30-80 mph, 100'
 0.150" I.D. • 0.250" O.D.

DISPLAY PACKAGE



67457P
PITOT TUBING
 25'
 0.150" I.D. • 0.250" O.D.

ENGINE SYNCHRONIZER MODULE (CODE L)

1508370P
ENG SYNCH MODULE
 4-Cycle Gas



CODE T

Diesel Alternator Tachometers alternator

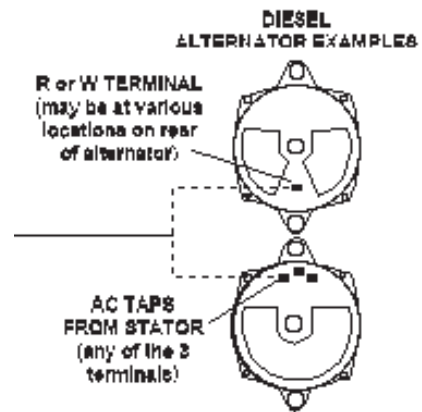
NOTE: Alternator must have an AC tap, usually marked "AC", "R" or "W". If such a tap is not present, a local alternator repair shop can usually add one.

You will need to know the number of magnetic poles in your alternator.

Consult the alternator maker or local alternator repair shop if you do not know this.

Also, you will have to calculate the pulley ratio from crankshaft to alternator.

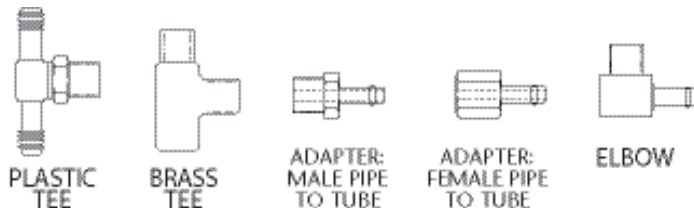
Tachometers are factory calibrated for several combinations of poles and pulley ratios, but in almost all cases you will need a Portable Master Shop Tachometer for initial calibration.



CODE WP

Water Pressure (0-15/0-30/0-40/0-60 PSI):
 (Included with water pressure gauge kits, which contain the instrument, 20 feet of pitot tubing and the parts shown at right.)

NOTE: For Yamaha, also order adapter **61886P**



MISCELLANEOUS ACCESSORIES

 <p>61886P YAMAHA ADAPTER FOR WP KIT/TEMP SENDER I.D. 1/8" NPT</p>	 <p>6219371P DROPPING RESISTOR 24-12V, 2" Gauges</p>	 <p>1827871P BULB & SOCKET KIT</p>	 <p>10860 BLANK GAUGE INSERT (2")</p>
 <p>IA62995 LIGHT KIT, WEDGE BASE 12VDC</p>	 <p>FS45430 FUSE HOLDER, PANEL MOUNT</p>	 <p>IA55009 Z BRACKET O/B Temp. Sender</p>	 <p>1502778 RUDDER ANGLE IND. SENDER, SINGLE STATION</p>

IGNITION SWITCHES FOR WORLD OUTBOARD MOTORS

- Exact OEM replacement installation
- Ideal for DFI, EFI and MPI engines
- Heavy duty potted construction
- Minimal bleed per circuit
- Molded umbrella type key



MP51090**
MP51092 – BULK 100 PCS/CTN
 IGNITION SWITCH
 3 Position Magneto – OFF- RUN-START
 PUSH to Choke
 Replaces: Mercury 87-17009A5



MP52000**
MP52002 – BULK 100 PCS/CTN
 IGNITION SWITCH
 3 Position Magneto – OFF- RUN-START
 PUSH to Choke
 Replaces: Mercury 87-88107A5



MP51010**
MP51012 – BULK 100 PCS/CTN
 IGNITION SWITCH
 Suzuki 2 & 4 stroke Outboards
 Replaces: 37110-99E00
 Colors on wires match factory color codes



MP51020**
MP51022 – BULK 100 PCS/CTN
 IGNITION SWITCH
 Yamaha Control Box 2 & 4 stroke
 Replaces: 703-82510-12-00
 Colors on wires match factory color codes



MP51030**
MP51032 – BULK 100 PCS/CTN
 IGNITION SWITCH
 Yamaha Dash Mount 2 & 4 stroke
 Dual Engine Application
 Replaces: 61B-82510-01-00,
 61B-82510-00-00
 Colors on wires match factory color codes



MP51040**
MP51042 – BULK 100 PCS/CTN
 IGNITION SWITCH
 Yamaha Control Box 2 & 4 stroke
 Push to Choke
 Replaces: 703-82510-43-00
 Colors on wires match factory color codes



MP51050**
MP51052 – BULK 100 PCS/CTN
 IGNITION SWITCH
 Yamaha Dash Mount 2 & 4 stroke
 Dual Engine Application, Push to Choke
 Replaces: 6K1-82510-06-00
 Colors on wires match factory color codes

** Display Packaged

Sierra offers the most complete selection of high quality polyester and brass ignition switches for the marine industry.

Marine grade glass-filled polyester switches

- Maximum corrosion protection – eliminates oxidation
- Inner seal between cylinder lock and contact plate
- Non-conductive housing eliminates potential shorts
- 20 Amp rating
- 2, 3 and 4 position switches
- Switches for magneto and conventional ignitions

Brass ignition switches

- Corrosion resistant construction
- Up to 15 Amp rating
- 2, 3 and 4 position switches
- Switches for magneto and conventional ignitions

** Display Packaged

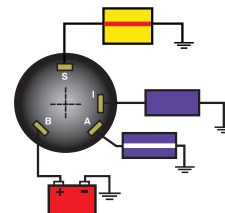
4 POSITION CONVENTIONAL - ACCESSORY - OFF - RUN - START



MP39800**

MP39802 – BULK 100 PCS/CTN

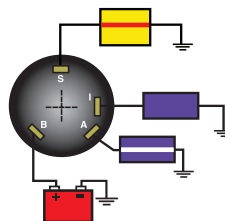
DESCRIPTION	
Material	Polyester
Length	Long: 1 1/8" maximum panel thickness
Terminal Type	4 Blade
Back Up Nut	Brass
Face Nut	Hex black plastic face nut
Hole Size	7/8"
Rated:	
Ignition	15 Amp @ 12v DC
Solenoid	30 Amp @ 12v DC
Accessory	15 Amp @ 12v DC



MP41040**

MP41042 – BULK 100 PCS/CTN

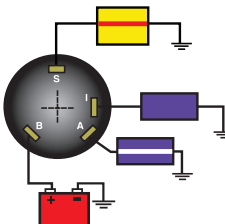
DESCRIPTION	
Material	Polyester
Length	Long: 1 1/8" maximum panel thickness
Terminal Type	4 Screw Tab
Back Up Nut	Brass
Face Nut	Knurled black plastic w/rubber cap
Hole Size	7/8"
Rated:	
Ignition	15 Amp @ 12v DC
Solenoid	30 Amp @ 12v DC
Accessory	15 Amp @ 12v DC



MP39070**

MP39072 – BULK 100 PCS/CTN

DESCRIPTION	
Material	Brass
Length	Long: 1" maximum panel thickness
Terminal Type	4 Screw Tab
Back Up Nut	Brass
Face Nut	Knurled black chrome w/rubber cap
Hole Size	7/8"
Rated:	
Ignition	15 Amp @ 12v DC
Solenoid	30 Amp @ 12v DC
Accessory	15 Amp @ 12 VDC



MP39700-1**

MP39702-1 – BULK 100 PCS

DESCRIPTION	
Material	Polyester
Length	Long: 1 1/8" maximum panel thickness
Terminal Type	4 Color Code Wires
Back Up Nut	Brass
Face Nut	Knurled black plastic w/rubber cap
Hole Size	7/8"
Rated:	
Ignition	15 Amp @ 12 VDV
Solenoid	30 Amp @ 12 VDC
Accessory	15 Amp @ 12 VDC

WIRE & DIAGRAM COLOR CODES

Red - Battery
Black - Magneto Ground

Yellow w/ Red Stripe - Solenoid
Black w/ Yellow Stripe - Magneto

Purple - Ignition
Yellow w/ Black Stripe - Choke

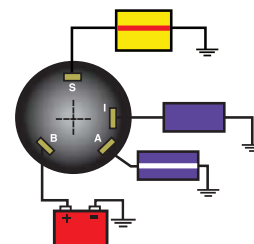
Purple w/ White Stripe - Accessory

4 POSITION CONVENTIONAL - ACCESSORY - OFF - RUN - START



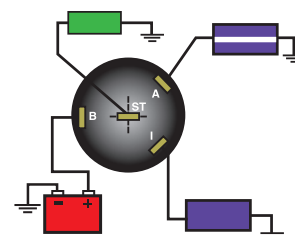
MP41020**
MP41022 – BULK 100 PCS/CTN

DESCRIPTION	
Material	Brass
Length	Long: 1" maximum panel thickness
Terminal Type	4 Screw Tab
Back Up Nut	Brass
Face Nut	Hex Chrome Face Nut
Hole Size	7/8"
Rated:	
Ignition	15 Amp @ 12v DC
Solenoid	30 Amp @ 12v DC
Accessory	15 Amp @ 12 VDC



UN12140**
UN12142 – BULK 100 PCS/CTN

DESCRIPTION	
Material	Die Cast Zinc
Length	Short: 5/8" maximum panel thickness
Terminal Type	4-Threaded Stud
Back Up Nut	Die Cast Zinc
Face Nut	Knurled Chrome Face Nut
Hole Size	9/16"
Rated:	
Ignition	15 Amp @ 12v DC
Solenoid	30 Amp @ 12v DC
Accessory	15 Amp @ 12v DC

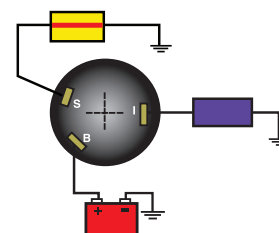


3 POSITION CONVENTIONAL - OFF - RUN - START



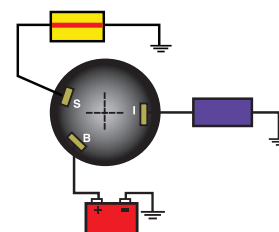
MP39060-1**
MP39062-1 – BULK 100 PCS/CTN

DESCRIPTION	
Material	Brass
Length	Long: 1 1/8" maximum panel thickness
Terminal Type	3 Screw Tab
Back Up Nut	Brass
Face Nut	Hex Chrome Face Nut
Hole Size	7/8"
Rated:	
Ignition	15 Amp @ 12v DC
Solenoid	30 Amp @ 12v DC



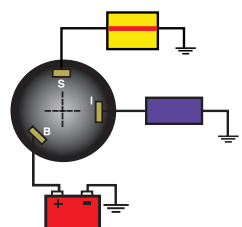
MP39080-1**
MP39082-1 – BULK 100 PCS/CTN

DESCRIPTION	
Material	Brass
Length	Long: 1 1/8" maximum panel thickness
Terminal Type	3 Screw Tab
Back Up Nut	Brass
Face Nut	Knurled black plastic w/rubber cap
Hole Size	7/8"
Rated:	
Ignition	15 Amp @ 12v DC
Solenoid	30 Amp @ 12v DC



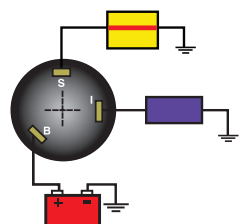
MP39120**
MP39122 – BULK 100 PCS/CTN

DESCRIPTION	
Material	Polyester
Length	Long: 1 1/8" maximum panel thickness
Terminal Type	3 Screw Tab
Back Up Nut	Brass
Face Nut	Hex black plastic face nut
Hole Size	7/8"
Rated:	
Ignition	15 Amp @ 12v DC
Solenoid	30 Amp @ 12v DC



MP39780**
MP39782 – BULK 100 PCS/CTN

DESCRIPTION	
Material	Polyester
Length	Short: 5/8" maximum panel thickness
Terminal Type	3 Screw Tab
Back Up Nut	Brass
Face Nut	Hex black plastic face nut
Hole Size	7/8"
Rated:	
Ignition	15 Amp @ 12v DC
Solenoid	30 Amp @ 12v DC



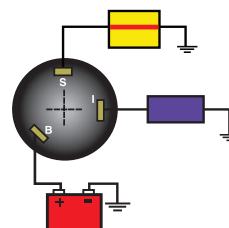
** Display Packaged

3 POSITION CONVENTIONAL - OFF - RUN - START



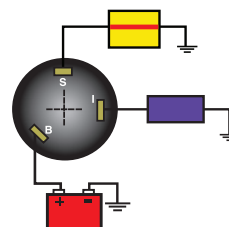
MP39200**
MP39202 – BULK 100 PCS/CTN

DESCRIPTION	
Material	Polyester
Length	Long: 1 1/8" maximum panel thickness
Terminal Type	3 Screw Tab
Back Up Nut	Brass
Face Nut	Knurled black plastic w/rubber cap
Hole Size	7/8"
Rated:	
Ignition	15 Amp @ 12v DC
Solenoid	30 Amp @ 12v DC



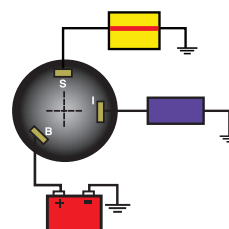
MP39770**
MP39772 – BULK 100 PCS/CTN

DESCRIPTION	
Material	Polyester
Length	Long: 1 1/8" maximum panel thickness
Terminal Type	3 Blade
Back Up Nut	Brass
Face Nut	Knurled black plastic w/rubber cap
Hole Size	7/8"
Rated:	
Ignition	15 Amp @ 12v DC
Solenoid	30 Amp @ 12v DC



MP41030**
MP41032 – BULK 100 PCS/CTN

DESCRIPTION	
Material	Polyester
Length	Short: 5/8" maximum panel thickness
Terminal Type	3 Screw Tab
Back Up Nut	Brass
Face Nut	Knurled black plastic w/rubber cap
Hole Size	7/8"
Rated:	
Ignition	15 Amp @ 12v DC
Solenoid	30 Amp @ 12v DC

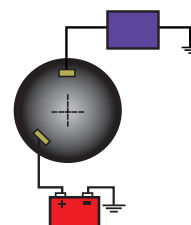


2 POSITION CONVENTIONAL - OFF - RUN USE WITH SEPARATE STARTER BUTTON



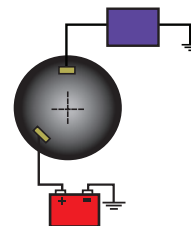
MP39010
MP39012 – BULK 100 PCS/CTN

DESCRIPTION	
Material	Brass
Length	Short: 5/8" maximum panel thickness
Terminal Type	2 Screw Tab
Back Up Nut	Brass
Face Nut	Hex Chrome Face Nut
Hole Size	3/4"
Rated:	
Ignition	5 Amp @ 12 VDV



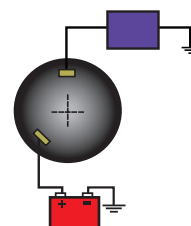
MP39020**
MP39022 – BULK 100 PCS/CTN

DESCRIPTION	
Material	Brass
Length	Long: 1 1/8" maximum panel thickness
Terminal Type	2 Screw Terminal
Back Up Nut	Brass
Face Nut	Hex Chrome Face Nut
Hole Size	7/8"
Rated:	
Ignition	15 Amp @ 12v DC



MP39820-1 – INDIVIDUAL BOX
MP39822-1 – BULK 100 PCS/CTN

DESCRIPTION	
Material	Brass
Length	Long: 1 1/8" maximum panel thickness
Terminal Type	2 Screw Terminal
Back Up Nut	Brass
Face Nut	Knurled Chrome Plated w/rubber cap
Hole Size	7/8"
Rated:	
Ignition	15 Amp @ 12v DC



WIRE & DIAGRAM COLOR CODES

- Red - Battery
- Black - Magneto Ground
- Yellow w/ Red Stripe - Solenoid
- Black w/ Yellow Stripe - Magneto
- Purple - Ignition
- Yellow w/ Black Stripe - Choke
- Purple w/ White Stripe - Accessory

** Display Packaged

4 POSITION MAGNETO - ACCESSORY - OFF - RUN - START



MP39710-1**
MP39712-1 - BULK 100 PCS
PUSH TO CHOKE

DESCRIPTION	
Material	Polyester
Length	Short: 5/8" maximum panel thickness
Terminal Type	7 Color Code Wires
Back Up Nut	Brass
Face Nut	Knurled black plastic w/rubber cap
Hole Size	7/8"
Rated:	
Ignition	15 Amp @ 12 VDV
Solenoid	30 Amp @ 12 VDC
Accessory	15 Amp @ 12 VDC
Choke	7 Amp @ 12 VDC



MP39720-1**
MP39722-1 - BULK 100 PCS

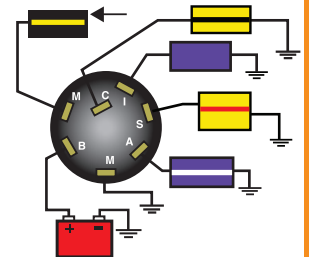
For Outboard engines without choke circuit

DESCRIPTION	
Material	Polyester
Length	Short: 5/8" maximum panel thickness
Terminal Type	6 Color Code Wires
Back Up Nut	Brass
Face Nut	Knurled black plastic w/rubber cap
Hole Size	7/8"
Rated:	
Ignition	15 Amp @ 12 VDV
Solenoid	30 Amp @ 12 VDC
Accessory	15 Amp @ 12 VDC



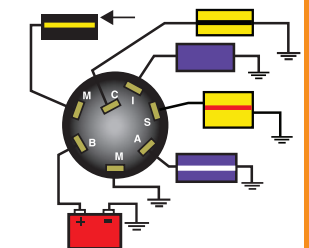
MP41010**
MP41012 - BULK 100 PCS/CTN
PUSH TO CHOKE

DESCRIPTION	
Material	Polyester
Length	Short: 5/8" maximum panel thickness
Terminal Type	7 Screw Tab
Back Up Nut	Brass
Face Nut	Hex black plastic face nut
Hole Size	7/8"
Rated:	
Ignition	15 Amp @ 12v DC
Solenoid	30 Amp @ 12v DC
Choke	7 Amp @ 12v DC
Accessory	15 Amp @ 12v DC



MP41080**
MP41082 - BULK 100 PCS/CTN
PUSH TO CHOKE

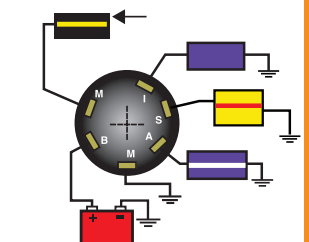
DESCRIPTION	
Material	Polyester
Length	Short: 5/8" maximum panel thickness
Terminal Type	6 Screw Tab, 1 Boss Screw
Back Up Nut	Plastic
Face Nut	Hex black plastic face nut
Hole Size	7/8"
Rated:	
Ignition	15 Amp @ 12v DC
Solenoid	30 Amp @ 12v DC
Choke	7 Amp @ 12v DC
Accessory	15 Amp @ 12v DC



MP39730**
MP39732 - BULK 100 PCS

For Outboard engines without choke circuit

DESCRIPTION	
Material	Polyester
Length	Short: 5/8" maximum panel thickness
Terminal Type	6 Screw Tab
Back Up Nut	Brass
Face Nut	Hex black plastic face nut
Hole Size	7/8"
Rated:	
Ignition	15 Amp @ 12v DC
Solenoid	30 Amp @ 12v DC
Accessory	15 Amp @ 12v DC



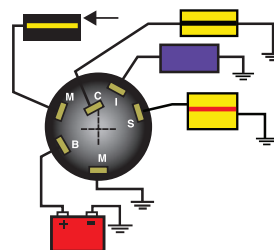
** Display Packaged

3 POSITION MAGNETO - OFF - RUN - START



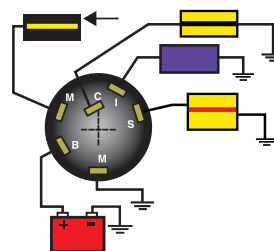
MP39760**
MP39762 - BULK 100 PCS/CTN
PUSH TO CHOKE

DESCRIPTION	
Material	Polyester
Length	Short: 5/8" maximum panel thickness
Terminal Type	5 Screw Tab, 1 Boss Screw
Back Up Nut	Plastic
Face Nut	Hex black plastic face nut
Hole Size	7/8"
Rated:	
Ignition	15 Amp @ 12v DC
Solenoid	30 Amp @ 12v DC
Choke	7 Amp @ 12v DC

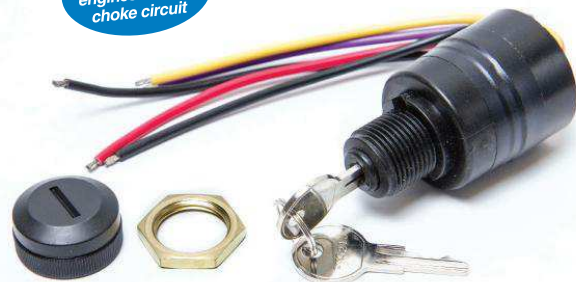


MP41000**
MP41002 - BULK 100 PCS/CTN
PUSH TO CHOKE

DESCRIPTION	
Material	Polyester
Length	Short: 5/8" maximum panel thickness
Terminal Type	6 Screw Tab
Back Up Nut	Brass
Face Nut	Hex black plastic face nut
Hole Size	7/8"
Rated:	
Ignition	15 Amp @ 12v DC
Solenoid	30 Amp @ 12v DC
Choke	7 Amp @ 12v DC



For Outboard engines without choke circuit



MP39740-1**
MP39742-1 - BULK 100 PCS

DESCRIPTION	
Material	Polyester
Length	Short: 5/8" maximum panel thickness
Terminal Type	5 Color Code Wires
Back Up Nut	Plastic
Face Nut	Knurled black plastic w/rubber cap
Hole Size	7/8"
Rated:	
Ignition	15 Amp @ 12 VDV
Solenoid	30 Amp @ 12 VDC
Accessory	15 Amp @ 12 VDC



MP41090-1**
MP41092-1 - BULK 100 PCS
PUSH TO CHOKE

(Colors on switch wires match factory color codes.)

DESCRIPTION	
Material	Polyester
Length	Short: 5/8" maximum panel thickness
Terminal Type	6 Color Coded Wires
Back Up Nut	Brass
Face Nut	Knurled black plastic w/rubber cap
Hole Size	7/8"
Rated:	
Ignition	15 Amp @ 12v DC
Solenoid	30 Amp @ 12v DC
Choke	7 Amp @ 12v DC



MP41070-2**
MP41072-2 - BULK 100 PCS/CTN
PUSH TO CHOKE / MERCURY CONTROL BOX APPLICATIONS

(Colors on switch wires match factory color codes.)

DESCRIPTION	
Material	Polyester
Length	Short: 5/8" maximum panel thickness
Terminal Type	6 Color Coded Wire Leads/Potted
Back Up Nut	Not Required
Face Nut	Hex black plastic face nut
Hole Size	7/8"
Rated:	
Ignition	15 Amp @ 12v DC
Solenoid	30 Amp @ 12v DC
Choke	7 Amp @ 12v DC

WIRE & DIAGRAM COLOR CODES

- Red - Battery
- Black - Magneto Ground
- Yellow w/ Red Stripe - Solenoid
- Black w/ Yellow Stripe - Magneto
- Purple - Ignition
- Yellow w/ Black Stripe - Choke
- Purple w/ White Stripe - Accessory

** Display Packaged

3 POSITION MAGNETO - OFF - RUN - START

MP52000**

MP52002 - BULK 100 PCS
PUSH TO CHOKE

DESCRIPTION	
Material	Polyester
Length	Short: 5/8" maximum panel thickness
Terminal Type	6 Color Coded Wire Leads/Potted
Back Up Nut	Plastic
Face Nut	Hex black plastic face nut
Hole Size	7/8"
Rated:	
Ignition	15 Amp @ 12v DC
Solenoid	30 Amp @ 12v DC
Choke	7 Amp @ 12v DC



MP51090**

MP51092 - BULK 100 PCS
PUSH TO CHOKE

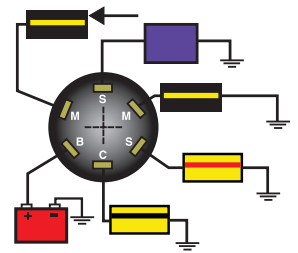
DESCRIPTION	
Material	Polyester
Length	Short: 5/8" maximum panel thickness
Terminal Type	6 Color Coded Wire Leads/Potted
Back Up Nut	Not Required
Face Nut	Hex black plastic face nut
Hole Size	7/8"
Rated:	
Ignition	15 Amp @ 12v DC
Solenoid	30 Amp @ 12v DC
Choke	7 Amp @ 12v DC



MP39090**

MP39092 - BULK 100 PCS/CTN
PUSH TO CHOKE

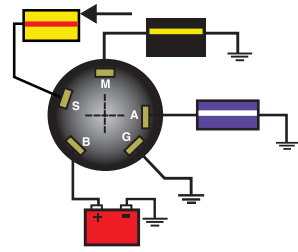
DESCRIPTION	
Material	Polyester
Length	Long: 1 1/8" maximum panel thickness
Terminal Type	6 Screw Tab
Back Up Nut	Anodized steel
Face Nut	Hex plastic face nut w/snap on rubber cap
Hole Size	7/8"
Rated:	
Ignition	15 Amp @ 12v DC
Solenoid	30 Amp @ 12v DC
Choke	7 Amp @ 12v DC



MP39040**

MP39042 - BULK 100 PCS/CTN

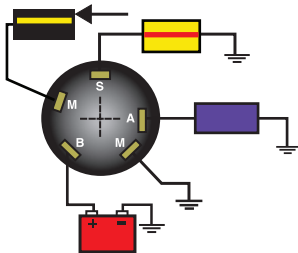
DESCRIPTION	
Material	Brass
Length	Long: 1 1/8" maximum panel thickness
Terminal Type	5 Screw Tab
Back Up Nut	Brass
Face Nut	Hex Chrome Face Nut
Hole Size	7/8"
Rated:	
Ignition	10 Amp @ 12v DC
Solenoid	30 Amp @ 12v DC



MP39100**

MP39102 - BULK 100 PCS/CTN

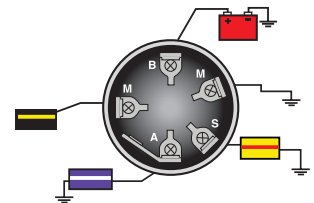
DESCRIPTION	
Material	Polyester
Length	Long: 1 1/8" maximum panel thickness
Terminal Type	5 Screw Tab
Back Up Nut	Brass
Face Nut	Hex black plastic face nut
Hole Size	7/8"
Rated:	
Ignition	15 Amp @ 12v DC
Solenoid	30 Amp @ 12v DC



MP39830**

MP39832 - BULK 100 PCS/CTN

DESCRIPTION	
Material	Polyester
Length	Long: 1 1/8" maximum panel thickness
Terminal Type	6 Screw Tab
Back Up Nut	Brass
Face Nut	Hex black plastic face nut
Hole Size	7/8"
Rated:	
Ignition	15 Amp @ 12v DC
Solenoid	30 Amp @ 12v DC



*Terminal to power separately controlled choke circuit

** Display Packaged

EMERGENCY ENGINE CUT-OFF SWITCHES

- Kills ignition when lanyard is pulled
- For use with conventional or magneto ignitions
- Unique design of **MP40960** and **MP40970** keeps plunger down when lanyard connected
- Seals out moisture
- Makes reconnection easier
- Panel thickness up to 1/4"



18-65450
EMERGENCY CUT-OFF SWITCH
Replaces: Yamaha 6E9-82575-02-00
Push button kill feature
Circuit closed with lanyard off.
Use **MP28860** replacement lanyard.



MP28870**
EMERGENCY CUT-OFF SWITCH
Replaces: OMC 585134
Circuit closed with lanyard off.
Use **MP28900** replacement lanyard.
MP28872-1
"Bulk" - 100 pieces per carton



MP40950**
EMERGENCY CUT-OFF SWITCH
4 terminals allow selection of normally open or normally closed circuit.
Use **MP40990** replacement lanyard.



MP40960**
EMERGENCY CUT-OFF SWITCH
4 terminals allow selection of normally open or normally closed circuit.
Use **MP40980** replacement lanyard.
MP40962
"Bulk" - 100 pieces per carton



MP40970-1**
EMERGENCY CUT-OFF SWITCH
4 terminals allow selection of normally open or normally closed circuit.
Use **MP40990** replacement lanyard.
MP40972-1
"Bulk" - 100 pieces per carton.

REPLACEMENT LANYARDS



18-1282
LANYARD
Replaces: OMC 398602
Tiller Steer Models - ALL



18-1294
DESS PROGRAMMABLE SAFETY LANYARD
Replaces: Sea-Doo/BRP 278-002-199, 1
Fits: All BRP crafts equipped with DESS.
Programmable with STATS



MP28850**
LANYARD
Replaces: Honda, Mercury, Mariner, BRP, Yamaha, Suzuki, OMC



MP28860**
LANYARD
Replaces: Yamaha 682-82556-00-00



MP28880**
LANYARD
Replaces: OMC 432230
1995-Older



MP28890**
LANYARD
Replaces: OMC 176288
1996 and Newer



MP28900**
LANYARD
Replaces: OMC 432230
1995-Older



MP40980**
LANYARD
MP40982
"Bulk" - 100 pieces per carton



MP40990**
LANYARD
MP40992
"Bulk" - 100 pieces per carton

FACE AND BOOT NUTS



MP39190**
WEATHER PROOF BOOT NUT
Fits: All Sierra polyester ignition switches, 1996 & later. 13/16"-16 Thread. Rotating rubber seal. Seals out moisture and dust from lock cylinder



MP39270**
FACENUT
For polyester ignition switches **MP39100** thru **MP39120**. Nut has extra long threads for positive engagement on mounting bushing for early (Pre-1995) style with 13/16"-20 thread ONLY!

** Display Packaged

ROTSWITCH® ROTARY SWITCHES

- Unique ergonomic design, styling and performance
- 20 AMP @ 12 Volts DC
- Durable cam design for long life
- UV stabilized thermoplastic housing
- Knob acts as umbrella - Silicone lip seal mates with stalk
- Separate light modules optional
- Replaces toggle or rocker switches with minimal panel alterations
- 1/2" hole size

** Display Packaged



RotoSwitch® provides illumination with different colors providing immediate visual information of switch position.

	BULK ^① NUMBER	PART NUMBER	NUMBER OF BATTERY FEEDS	CIRCUITS "ON"			
				45° COUNTER CLOCKWISE	12 O'CLOCK	45° CLOCKWISE	90° CLOCKWISE
	MP78712 *MP59012	MP78710**	1	—	OFF	#1	—
	MP78722	MP78720	1	—	OFF	#1(M)	—
	*MP59032	MP78730**	1	#1	OFF	#2	—
	MP59042	MP78740	1	#1(M)	OFF	#2(M)	—
	MP78802 *MP59102	MP78800**	2	#1	OFF	#2	—
	MP78822 *MP59122	MP78820	1	#2	OFF	#1&2	—
	*MP59132	MP78830	1	—	OFF	#2	#1&2
	*MP59162	MP78860**	1	OFF	#1	#2	#1&2

①Bulk - 100 pieces per carton. * Switch Only - No Knob (M)=MOMENTARY

REPLACEMENT KNOBS

All include rubber umbrella seal. Original Ergotech design knob.



MP79740
MP79742 (BULK 100 PCS/CTN)
Black knob with black indicator.



MP79760**
MP79762 (BULK 100 PCS/CTN)
Black knob with light tube. Use with illumination module.



MP78372
Black knob with light tube for use with light module.

Mounting Accessories for RotoSwitch®.



MP78960
MP78962 (BULK 100 PCS/CTN)
Anti-rotation collar. Use when installing non-illuminated RotoSwitches in very thin dash panels. This adapter prevents the switch from "slipping" if excessive force is used to actuate the switch.

ILLUMINATION MODULES

Add flexibility and function to any installation of RotoSwitch® rotary switches. By using a variety of colored lenses, the status of each switch – "Off", "On-1", "On-2" – can instantly be determined.



MP78870**
MP78872 (BULK 100 PCS/CTN)



MP78910**
MP78912 (BULK 100 PCS/CTN)



MP78942 ①



MP78950
MP78952

C = Clear R = Red G = Green B = Black

** Display Packaged

STANDARD WEATHER RESISTANT CONTURA® V ROCKER SWITCHES

- Non-corrosive plastic construction
- Protects against dust and prolonged spray to IP66 and IP68 standards
- Meets UL 1500, ISO 8846 ignition protection requirements
- Supplied with neoprene mounting gasket
- Removable actuators
- Brass blade terminals, silver contacts - Rated: 20 amps @ 12 VDC

Diagram	Part Number	Switch Function
	RK19210**	ON-OFF SPST
	RK19220**	ON-OFF-ON SPDT
	RK19230**	MOM ON-OFF SPST
	RK19240**	MOM ON-OFF-MOM ON DPDT



RK22180
ACTUATOR
BLACK CONTURA V
(2EA)

** Display Packaged

ILLUMINATED WEATHER RESISTANT CONTURA® V ROCKER SWITCHES



- Non-corrosive plastic construction
- Protects against dust and prolonged spray to IP66 and IP68 standards
- Meets UL 1500, ISO 8846 ignition protection requirements
- Supplied with neoprene mounting gasket
- Illuminates red in "ON" position
- Removable actuators
- Brass blade terminals, silver contacts - Rated: 20 amps @ 12 VDC

DIAGRAM	PART NUMBER	SWITCH FUNCTION
	RK19310**	ON-OFF SPST
	RK19320**	ON-OFF-ON SPDT



RK22190**
ACTUATOR
BLACK CONTURA V
WITH LENS (2EA)



RK22200**
ACTUATOR
BLACK CONTURA V
WITH 2 LENS (2EA)



RK22290**
ACTUATOR
REMOVAL TOOL

** Display Packaged

STANDARD WEATHER RESISTANT CONTURA® III ROCKER SWITCHES



- Non-corrosive plastic construction
- Protects against dust and prolonged spray to IP66 and IP68 standards
- Meets UL 1500, ISO 8846 ignition protection requirements
- Supplied with neoprene mounting gasket
- Removable actuators
- Brass blade terminals, silver contacts - Rated: 20 amps @ 12 VDC

DIAGRAM	ONE PADDLE PART #	TWO PADDLES (GREY & BLACK) PART #	SWITCH FUNCTION
	BLACK RK19680**	RK19680TP**	ON-OFF SPST
	BLACK RK19690**	RK19690TP**	ON-OFF-ON SPDT
	BLACK RK19720**	RK19710TP**	MOM ON-OFF SPST
	BLACK RK19760**	RK19750TP**	MOM ON-OFF-MOM ON SPDT
	BLACK RK19860**	RK19850TP**	MOM ON-OFF-MOM ON DPDT
	BLACK RK19880**	RK19870TP**	MOM ON-OFF DPST



****RK22100**
ACTUATOR
BLACK CONTURA III
(2EA)



****RK22110**
ACTUATOR
GRAY CONTURA III
(2EA)

** Display Packaged

ILLUMINATED WEATHER RESISTANT CONTURA® III ROCKER SWITCHES



- Non-corrosive plastic construction
- Protects against dust and prolonged spray to IP66 and IP68 standards
- Meets UL 1500, ISO 8846 ignition protection requirements
- Supplied with neoprene mounting gasket
- Illuminates red in "ON" position - 12V LED bulb
- Removable actuators
- Brass blade terminals, silver contacts - Rated: 20 amps @ 12 VDC

DIAGRAM	ONE PADDLE PART #	TWO PADDLES (GREY & BLACK) PART #	SWITCH FUNCTION
	BLACK RK19700**	RK19700TP**	OFF-ON SPST
	BLACK RK19780**	RK19770TP**	MOM ON-OFF-ON SPDT
	BLACK RK19820	RK19810TP**	MOM ON-OFF-ON DPDT
	BLACK RK19910**	RK19890TP**	OFF-ON DPST
	BLACK RK19740**	RK19730TP**	ON-OFF-ON SPDT
	BLACK RK19840**	RK19830TP**	ON-OFF-ON DPDT



RK22120**
ACTUATOR
BLACK CONTURA III
WITH LENS (2EA)



RK22130**
ACTUATOR
GRAY CONTURA III
WITH LENS (2EA)



RK22140**
ACTUATOR
BLACK CONTURA III
WITH 2 LENSES (2EA)



RK22150**
ACTUATOR
GRAY CONTURA III
WITH 2 LENSES (2EA)

** Display Packaged

STANDARD WEATHER RESISTANT CONTURA® II ROCKER SWITCHES



- Protects against dust and prolonged spray to IP66 and IP68 standards
- Supplied with neoprene mounting gasket
- Removable actuators
- Brass blade terminals, silver contacts - Rated: 20 amps @ 12 VDC

DIAGRAM	PART NUMBER	SWITCH FUNCTION
	RK19400-1**	OFF-ON SPST
	RK19410-1**	OFF-MOM ON SPST
	RK19410-RED**	OFF-MOM ON SPST Red actuator - for horn
	RK19420-1**	ON-OFF-ON SPDT

DIAGRAM	PART NUMBER	SWITCH FUNCTION
	RK19920-1**	MOM ON-OFF-ON SPDT
	RK19930-1**	MOM ON-OFF-ON DPDT
	RK19430-1**	MOM ON-OFF-MOM ON SPDT
	RK19940-1**	OFF-MOM ON DPST
	RK19480-1**	MOM ON-OFF-MOM ON DPDT
	RK19490-1**	ON-OFF-ON DPDT



RK22160**
ACTUATOR
BLACK CONTURA II
(2EA)



RK22170**
ACTUATOR
RED CONTURA II
(2EA)

ILLUMINATED WEATHER RESISTANT CONTURA® II ROCKER SWITCHES



- Non-corrosive plastic construction
- Removable actuators
- Brass blade terminals, silver contacts
- Rated: 20 amps @ 12 VDC

DIAGRAM	PART NUMBER	SWITCH FUNCTION
	RK19440-1**	OFF-ON SPST
	RK19450-1**	MOM ON - OFF SPST
	RK19460-1**	ON-OFF-ON SPDT
	RK19540-1**	ON-OFF-ON DPDT
	RK19550-1**	MOM ON-OFF-MOM ON DPDT

** Display Packaged

STANDARD ROCKER SWITCHES - WITH BLACK ACTUATORS



- Non-corrosive plastic construction
- Black actuators w/ black face plate
- Silver contacts
- Brass blade terminals
- Rated: 20 amps @ 12 VDC

DIAGRAM	BULK #	PART NUMBER	SWITCH FUNCTION
	RK40142	RK40140**	ON-OFF SPST
	RK40152	RK40150**	MOM ON - OFF SPST
	RK40172	RK40170**	ON-OFF-ON SPDT
	RK40352	RK40350**	MOM ON-OFF-MOM ON SPDT
	RK40472	RK40470**	MOM ON-OFF-MOM ON DPDT
	RK40482	RK40480**	ON-OFF-ON DPDT
	RK40362	RK40360**	ON-OFF-MOM ON SPDT
	RK19572	RK19570	ON(1)-OFF-ON(1&2) DPDT



ILLUMINATED ROCKER SWITCHES

- Dependent pilot light - illuminates in "on" position
- Non-corrosive plastic construction
- Silver contacts
- Brass blade terminals
- Rated: 20 amps @ 12 VDC



DIAGRAM	BULK #	PART NUMBER	SWITCH FUNCTION
	RK40102	RK40100**	ON-OFF SPST
	RK40112	RK40110**	ON-OFF-ON SPDT
	RK40122	RK40120**	MOM ON - OFF SPST
	RK40132	RK40130**	MOM ON-OFF-MOM ON SPDT

** Display Packaged

ILLUMINATED ROCKER SWITCHES - SOFT SPOT LIGHT



- Independent pilot light - illuminates when panel lights ON
- Illuminates white when panel lights are ON, changes to red when switch is ON
- Soft spotlight helps preserve night vision • Non-corrosive plastic construction
- Silver contacts • Brass blade terminals • Rated: 20 amps @ 12 VDC

DIAGRAM	BULK #	PART NUMBER	SWITCH FUNCTION
	RK40372	RK40370**	ON-OFF SPST
	RK40382	RK40380**	MOM ON - OFF SPST
	RK40392	RK40390**	ON-OFF-ON SPDT
	RK40402	RK40400**	MOM ON-OFF-MOM ON SPDT



WEATHER RESISTANT ILLUMINATED ROCKER SWITCHES



- Certified to IP 66 and IP 68 - protected against dust, prolonged spray and submersion
- Supplied with neoprene mounting gasket
- Removable actuators
- Brass blade terminals, silver contacts
- Snap in lens of choice (Amber, Clear, Green, Red)
- Rated: 20 amps @ 12 VDC

DIAGRAM	PART NUMBER	SWITCH FUNCTION	KIT DETAILS
	RK19500K	OFF-ON SPST	Dependent pilot light - illuminates in "on" position Includes 1 lens of each color
	RK19510K	OFF-ON SPST	Independent pilot light - illuminates when panel light is turned "on" Includes 1 lens of each color
	RK19520K	ON-OFF-ON SPDT	Dependent pilot lights - each light illuminates in "on" position Includes 2 lenses of each color
	RK19530K	OFF-ON SPST	One dependent pilot light - illuminates in "on" position. One independent pilot light - illuminates when panel lights "on" Includes 2 lenses of each color

** Display Packaged

ROCKER SWITCH MOUNTING BRACKETS FOR INSTALLING TWO OR MORE ROCKER SWITCHES

- Fits Sierra Standard and Contura® Rocker Switches
- Sections snap together without tools
- Mounting hole for 2 end unit set - 2.02" (51.31 mm) wide x 1.90" (48.26 mm) high add 1.03" (26.16 mm) for additional sections



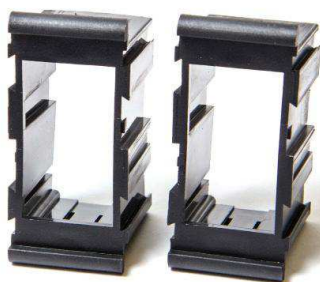
UN19700
BLANK COVER



UN19710**
1 CENTER SECTION



UN19720
TWO END SECTIONS



UN19730**
2 CENTER SECTIONS



UN19740**
1 END SECTION



UN19750**
2 - **UN19740 END SECTIONS
1 - **UN19710 - CENTER SECTION
1 - **UN19700 - BLANK COVER

INTERIOR & RV STYLE SWITCHES

NARROW BODY ROCKER SWITCHES ON - OFF SPST



RK21880** Non Illuminated
RK21890** Glows Red in ON position

- For use in **RK22070** panel
- Fits 7/16" X 1 1/4" cut out
- Blade Terminals
- 20 Amp @ 12 VDC

NARROW BODY ROCKER SWITCH ON - OFF SPST



RK19640**
RK19642 (Bulk - 100pcs./carton)

- Fits .550" X 1.125" cut out
- Blade Terminals
- 10 Amp @ 12 VDC

NARROW BODY ROCKER SWITCH ON - OFF SPST



RK19630**
RK19632 (Bulk - 100pcs./carton)

- Fits .550" x 1.125" cut out
- Blade Terminals
- 10 Amp @ 12 VDC
- Glows red in ON position

SURFACE MOUNT ILLUMINATED ROCKER SWITCHES OFF-ON SPST



RK21420** Red
RK21430 Green

- Illuminates in ON position
- Mount in 1/2" round holes
- Brass blade terminals
- 16 Amp @ 12 VDC

** Display Packaged

STANDARD TOGGLE SWITCHES



- Non-corrosive plastic construction
- Brass blade terminals, silver contacts
- 15/32" L x 15/32"-32 mounting stem
- Rated: 20 amps @ 12 VDC or 25 amp @ 12 VDC

*Rated 25 amp @ 12 VDC

DIAGRAM	BULK #	PART NUMBER	SWITCH FUNCTION
	TG4002252*	TG40020-1***	ON-OFF SPST
	TG4003252*	TG40030-1***	MOM ON-OFF SPST
	TG4004252*	TG40040-1***	ON-OFF-ON SPDT
	TG4005252*	TG40050-1***	MOM ON-OFF-MOM ON SPDT
	TG4016252*	TG40160-1***	ON-OFF-MOM ON SPDT
	TG4045252*	TG40450-1***	ON-OFF-ON DPDT
	TG4046252*	TG40460-1***	MOM ON-OFF-MOM ON DPDT
	TG40492	TG40490**	ON(1)-OFF-ON(1&2) DPDT

ILLUMINATED TOGGLE SWITCHES



- Non-corrosive plastic construction
- Illuminates white when panel lights are ON, changes to red when switch is ON
- Brass blade terminals, silver contacts
- 15/32" L x 15/32" -32 mounting stem
- Rated: 20 amps @ 12 VDC

DIAGRAM	BULK #	PART NUMBER	SWITCH FUNCTION
	TG40062	TG40060**	ON-OFF SPST
	TG40072	TG40070**	ON-OFF-ON SPDT
	TG40082	TG40080	MOM ON-OFF SPST
	TG40092	TG40090	MOM ON-OFF-MOM ON SPDT

TIP LIT TOGGLE SWITCHES



- Lights through tip of handle
- Non-corrosive plastic construction
- Illuminates white when panel lights are ON, changes to red when switch is ON
- Brass blade terminals, silver contacts
- 15/32" L x 15/32"-32 mounting stem
- Rated: 20 amps @ 12 VDC

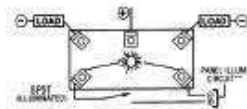
** Display Packaged

DIAGRAM	BULK #	PART NUMBER	SWITCH FUNCTION
	TG40302	TG40300**	ON-OFF SPST
	TG40312	TG40310**	MOM ON-OFF SPST
	TG40322	TG40320**	ON-OFF-ON SPDT
	TG40332	TG40330**	MOM ON-OFF-MOM ON SPDT
	TG40342	TG40340	ON-OFF-MOM ON SPDT
	TG19522	TG19520**	ON-OFF-ON DPDT
	TG19532	TG19530**	MOM ON-OFF-MOM ON DPDT

WEATHER RESISTANT TOGGLE SWITCH ON-OFF-ON SPDT



- Illuminates red in "on 1" position
- Illuminated white in "off" or "on 2" position
- O-ring seal in bushing seals out moisture and dirt
- Can be wired for independent or dependent illumination
- Rated: 20 amps @ 12 VDC

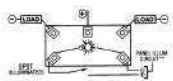


TG40010
TG40012 (Bulk - 100pcs./carton)

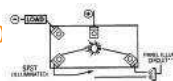
SATIN CHROME TIP TOGGLE SWITCHES



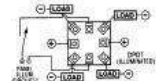
- Satin Chrome Handle with matching retaining ring
- Lights through tip of handle
- Non-corrosive plastic construction
- Illuminates white when panel lights are ON, changes to red when switch is ON
- Brass blade terminals, silver contacts
- 15/32" L X 13/32"-32 mounting stem
- Rated: 20 Amp @ 12 VDC



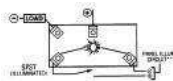
TG23010**
TG23012 (Bulk 100pcs./carton)
TOGGLE SWITCH
ON-OFF-ON SPDT



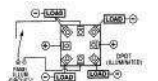
TG23030**
TG23032 (Bulk 100pcs./carton)
TOGGLE SWITCH
(ON)-OFF SPST



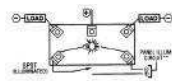
TG23050**
TG23052 (Bulk 100pcs./carton)
TOGGLE SWITCH
(ON)-OFF (ON) DPDT



TG23000**
TG23002 (Bulk 100pcs./carton)
TOGGLE SWITCH
ON-OFF SPST

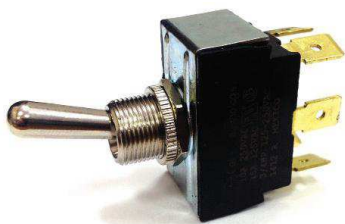


TG23020**
TG23022 (Bulk 100pcs./carton)
TOGGLE SWITCH
ON-OFF-ON DPDT



TG23040**
TG23042 (Bulk 100pcs./carton)
TOGGLE SWITCH
(ON)-OFF-(ON) SPDT

HEAVY DUTY 25 AMP TOGGLE SWITCHES



- Nickel Plated Brass Mounting Stem and Hardware
- Handle 11/16" (17.46mm) long
- Mounting Stem 15/32"-32 thread, 15/32" (11.81mm) long
- Fits panels up to 1/4" (6.35 mm) thick
- Rated : 25 Amp @ 12 VDC



TG22000**
TG22002 (Bulk 100pcs./carton)
ON-OFF SPST



TG22010**
TG22012 (Bulk 100pcs./carton)
ON-OFF-ON SPDT



TG22020**
TG22022 (Bulk 100pcs./carton)
ON-OFF-ON DPDT



TG22030**
TG22032 (Bulk 100pcs./carton)
MOM ON-OFF SPST



TG22040**
TG22042 (Bulk 100pcs./carton)
MOM ON-OFF-MOM
ON SPDT

** Display Packaged

HEAVY DUTY 50 AMP TOGGLE SWITCHES



- Super tough zinc die cast
- Heavy copper screw terminals
- Chrome plated plastic handle w/ metal core
- 15/32" L x 15/32"-32 mounting stem
- Rated: 50 Amp @ 12 VDC

TG21500**
TG21502 (Bulk - 100pcs./carton)
 ON-OFF SPST

TG21590
TG21592 (Bulk - 100pcs./carton)
 ON-OFF-ON SPST

TG21600**
TG21602 (Bulk - 100pcs./carton)
 MOM ON-OFF-MOM ON SPDT

WEATHER RESISTANT TOGGLE SWITCHES



- Plasticized coating seals out moisture and dirt
- Nickel plated brass handle, mounting stem and hardware
- 10" L 16 gauge wire leads
- Handle 11/16" (17.46 mm) long
- Mounting stem 15/32"-32, 13/32" (10.31mm) long
- Fits panel up to 3/16" (4.76 mm) thick
- Includes MP39030 weather proof boot nut
- Rated: 15 amps @ 12 VDC

TG19560-1
TG19562-1 (Bulk - 100pcs./carton)
 OFF-ON SPST

TG19540-1
TG19542-1 (Bulk - 100pcs./carton)
 OFF-MOM ON SPST



TG40000**
TG40002 (Bulk - 100pcs./carton)
 ON-OFF SPST

- Heavy duty all brass construction
- Chrome plated bat handle
- 3/8" L x 7/16"-28 mounting stem
- 2 screw terminals
- Rated: 20 Amps @ 12 VDC



TG21050-1**
TG21052-1 (Bulk - 100pcs./carton)
 ON-OFF SPST

- Heavy duty toggle switch
- Chrome plated bat handle
- 15/32" L x 15/32"-32 mounting stem
- Two 6" wire leads
- Rated: 35 Amps @ 12 VDC
- Rated: 6 Amps @ 125 VAC



TG21040**
TG21042 (Bulk - 100pcs./carton)
 ON-OFF SPST

- Heavy duty toggle switch
- Chrome plated brass bat handle
- 3/8" L x 15/32"-32 mounting stem
- 2 screw terminals
- Rated: 35 Amps @ 12 VDC
- Rated: 20 Amps @ 125 VAC



****TG21020-2****
***TG21022-2 (Bulk - 100pcs./carton)**
 ON-OFF SPST

- Heavy duty die cast toggle switch
- Chrome plated brass bat handle
- 15/32" L x 15/32"-32 mounting stem
- Sealed bushing
- 2 screw terminals
- Rated: 35 Amps @ 12 VDC
- Rated: 20 Amps @ 125 VAC



TG21070**
TG21072 (Bulk - 100pcs./carton)
 ON-OFF SPST

- Heavy duty toggle switch
- Chrome plated brass bat handle
- 15/32" L x 15/32"-32 mounting stem
- 2 screw terminals
- Rated: 35 Amps @ 12 VDC
- Rated: 20 Amps @ 125 VAC

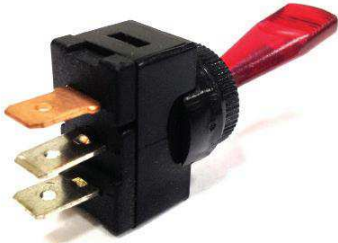


TG21080
TG21082 (Bulk - 100pcs./carton)
 ON-OFF-ON SPDT

- Heavy duty toggle switch
- Chrome plated brass bat handle
- 3/8" L x 15/32"-32 mounting stem
- 3 screw terminals
- Rated: 35 Amps @ 12 VDC
- Rated: 20 Amps @ 125 VAC

** Display Packaged

DUCKBILL TOGGLE SWITCHES

**TG21360****

TG21362 (Bulk 100pcs/carton)
ON-OFF SPST
Glows Red in ON position

1" translucent plastic handle

- Non-corrosive plastic construction
- Brass blade terminals
- 1/2" mounting hole
- Supplied with bezel nut and spacer ring
- Rated: 15 Amps @ 12 VDC

**TG21130****

TG21132 (Bulk 100pcs/carton)
ON-OFF SPST

1" black plastic handle

TG21140

TG21142 (Bulk 100pcs/carton)
ON-OFF-ON SPDT

**MP39220****

MP39222 (Bulk 100pcs/carton)

WEATHER PROOF BOOT NUT

- For illuminated toggle switches (except Duckbill)
- 1/2" boot seals out moisture yet allows illumination to show

**MP39030****

MP39032 (Bulk 100pcs/carton)

WEATHER PROOF BOOT NUT (GRAY)

- For standard toggles w/ 15/32" mounting stem
- Completely covers toggle handle
- Seals out moisture & dirt
- Nickel plated brass nut

**MP39240-1****

MP39242 (Bulk 100pcs/carton)

WEATHER PROOF BOOT NUT (BLACK)

- For standard toggles w/ 15/32" mounting stem
- Completely covers toggle handle
- Seals out moisture & dirt

**MP39280****

MP39282 (Bulk 100pcs/carton)

WEATHER PROOF BOOT NUT (BLACK)

- For standard toggles w/ 15/32" mounting stem
- Completely covers toggle handle
- Seals out moisture & dirt
- 2 piece construction chrome ring retains switch

INDICATOR LIGHTS

UN22100**

UN22102 (Bulk 100pcs/carton)
RED

**UN22110****

UN22112 (Bulk 100pcs/carton)
GREEN

UN22120**

UN22122 (Bulk 100pcs/carton)
AMBER

SMALL INDICATOR LIGHTS

- 12 VDC use only
- 5/16" mounting hole
- 5" tinned copper wire leads

**UN22150****

UN22152 (Bulk 100pcs/carton)
RED

UN22160

UN22162 (Bulk 100pcs/carton)
GREEN

SMALL INDICATOR LIGHTS

- 125 VAC use only
- 5/16" mounting hole
- 5" tinned copper wire leads

** Display Packaged

INDICATOR LIGHTS

LARGE INDICATOR LIGHTS

- 12 VDC use only
- 1/2" mounting hole
- 4" tinned copper wire leads



UN21280**
UN21282 (Bulk 100pcs/carton)
RED



UN21290**
UN21292 (Bulk 100pcs/carton)
GREEN



UN21320
UN21322 (Bulk 100pcs/carton)
AMBER

WEATHER-RESISTANT PUSH PULL SWITCHES



MP39380**
MP39382 (Bulk 100pcs/carton)
OFF-ON SPST

- Solid brass construction
- Gasket sealed case
- 3/8" mounting bushing
- 2 screw terminals
- 3/4" chrome plated brass knob
- For panels up to 1" thick
- Rated: 15 amp @ 12 VDC



MP39390**
MP39392 (Bulk 100pcs/carton)
OFF-ON SPST
with chrome plated plastic knob

MP39390B**
MP39392B (Bulk 100pcs/carton)
OFF-ON SPST
with chrome plated brass knob

- Solid brass construction
- Vinyl coated body to resist moisture
- Two 18 gauge x 12" wire leads
- 3/8" mounting bushing
- For panels up to 1" thick
- Rated: 15 amp @ 12 VDC

HEAVY DUTY MARINE PUSH PULL SWITCHES



MP39510
MP39512 (Bulk 100pcs/carton)
OFF-ON SPST

- Pull for ON
- Solid brass construction
- 3/8" mounting bushing
- 2 screw terminals
- For panels up to 1" thick
- Cream plastic knob
- Rated: 15 amp @ 12 VDC



MP39520**
MP39522 (Bulk 100pcs/carton)
OFF-ON SPST

- Pull for ON
- Solid brass construction
- 3/8" mounting bushing
- 2 screw terminals
- For panels up to 1" thick
- Chrome plated plastic knob
- Rated: 15 amp @ 12 VDC



MP39530**
MP39532 (Bulk 100pcs/carton)
OFF-ON SPST

- Pull for ON
- Solid brass construction
- 3/8" mounting bushing
- 2 screw terminals
- For panels up to 1" thick
- Chrome plated solid brass knob
- Rated: 15 amp @ 12 VDC



MP39540**
MP39542 (Bulk 100pcs/carton)
OFF-ON SPST

- Pull for ON
- Solid brass construction
- 3/8" mounting bushing
- 2 blade terminals
- For panels up to 1" thick
- Chrome finish plastic knob
- Rated: 15 amp @ 12 VDC



MP39570**
MP39572 (Bulk 100pcs/carton)
OFF-ON(1)-ON(1&2) SPDT

- First pull energizes #1
- Second pull energizes both circuits
- Solid brass construction
- 3/8" mounting bushing
- 3 screw terminals
- For panels up to 1" thick
- Chrome finish plastic knob
- Rated: 15 amp @ 12 VDC



MP39610**
MP39612 (Bulk 100pcs/carton)
OFF-ON(1)-ON(2&3) SPDT

- First pull energizes #1
- Second pull energizes two separate circuits
- For anchor/running lights or similar function
- Solid brass construction
- 3/8" mounting bushing
- 4 screw terminals
- For panels up to 1" thick
- Chrome finish plastic knob
- Rated: 15 amp @ 12 VDC

** Display Packaged

HEAVY DUTY MARINE PUSH PULL SWITCHES



- MP39600**
MP39602 (Bulk 100pcs./carton)
 OFF-ON (1 & 2) SPST
- Pull for ON - turns on two separate circuits
 - Solid brass construction
 - 3/8" mounting bushing
 - 3 screw terminals
 - For panels up to 1" thick
 - Chrome plated solid brass knob
 - Rated: 15 amp @ 12 VDC



- MP39580****
MP39582 (Bulk 100pcs./carton)
 OFF-ON(1)-ON(1&2) SPDT
- First pull energizes #1
 - Second pull energizes both circuits
 - Solid brass construction
 - 3/8" mounting bushing
 - 3 screw terminals
 - For panels up to 1" thick
 - Chrome plated solid brass knob
 - Rated: 15 amp @ 12 VDC



- MP39590 ****
MP39592 (Bulk 100pcs./carton)
 OFF-ON(1)-ON(1&2) SPDT
- First pull energizes #1
 - Second pull energizes both circuits
 - Solid brass construction
 - 3/8" mounting bushing
 - 3 blade terminals
 - For panels up to 1" thick
 - Chrome finish plastic knob
 - Rated: 15 amp @ 12 VDC



- MP39620**
MP39622 (Bulk 100pcs./carton)
 OFF-ON(1)-ON(2&3) SPDT
- First pull energizes #1
 - Second pull energizes two separate circuits
 - For anchor/running lights or similar function
 - Solid brass construction
 - 3/8" mounting bushing
 - 4 screw terminals
 - For panels up to 1" thick
 - Chrome plated solid brass knob
 - Rated: 15 amp @ 12 VDC



- MP39640**
MP39642 (Bulk 100pcs./carton)
 OFF-ON(1)-ON(2) SPDT
- First pull energizes #1
 - Second pull energizes circuit 2
 - Solid brass construction
 - 3/8" mounting bushing
 - 3 screw terminals
 - For panels up to 1" thick
 - Chrome plated solid brass knob
 - Rated: 15 amp @ 12 VDC

HEAVY DUTY PUSH BUTTON SWITCHES

MOMENTARY ON-OFF SPST

- Corrosion resistant plastic construction
- 1 7/16"L x 5/8" mounting stem
- 2 boss screw terminals
- Rated: 30 Amp @ 12 VDC

- MP39160****
MP39162 (Bulk 100pcs./carton)
 with rubber boot nut

- MP39180****
MP39182 (Bulk 100pcs./carton)
 with std. chrome face nut



- MP21460**
MP21462 (Bulk 100pcs./carton)
 PUSH ON - PUSH OFF
- Two 5" wire leads for easy connection
 - 3/8"L x 15/32" mounting stem
 - Rated: 3 amps @ 125 VAC



** Display Packaged

HEAVY DUTY BRASS PUSH BUTTON SWITCHES

MOMENTARY ON-OFF SPST

- Solid brass construction
- For starter, horn or other functions
- 1 3/8"L x 5/8"-32 mounting stem
- 2 boss screw terminals
- Rated: 35 amp @ 12 VDC



MP39360
MP39362 (Bulk 100pcs/carton)
 with recessed plunger button
 prevents accidental actuation



MP39410
MP39412 (Bulk 100pcs/carton)
 with large 15/16" anodized
 face nut and button

MP39420
MP39422 (Bulk 100pcs/carton)
 with chrome plated brass face
 nut and button

BRASS PUSH BUTTON SWITCHES

MOMENTARY ON-OFF SPST

- Solid brass construction
- For starter, horn or other functions
- 1 1/4"L x 5/8" mounting stem
- 2 screw terminals (except **MP39340**)
- Rated: 20 amp @ 12 VDC



MP39310**
MP39312 (Bulk 100pcs/carton)
 with chrome plated brass
 face nut and button



MP39320**
MP39322 (Bulk 100pcs/carton)
 with rubber boot nut



MP39340**
MP39342 (Bulk 100pcs/carton)
 with rubber boot nut
 blade terminals

COMPACT PUSH BUTTON SWITCHES

MOMENTARY ON-OFF SPST

- Contoured plastic button
- Chrome plated brass mounting stem
- 1/2" Mounting hole
- 2 brass blade terminals
- Rated 15 amp @ 12 VDC
- **MP39690** commonly used as Horn Switch



MP39680**
MP39682 (Bulk 100pcs/carton)
 Black Button

MP39690**
MP39692 (Bulk 100pcs/carton)
 Red Button

MP39670
MP39672 (Bulk 100pcs/carton)
 White Button



MP39300**
MP39302 (Bulk 100pcs/carton)
 MOM ON-OFF SPST
 • Large black plastic button
 • Chrome plated brass housing
 • For fog horns or sirens
 • Overall width 2 5/8"

** Display Packaged

EMERGENCY ENGINE CUT-OFF SWITCHES

MOMENTARY ON-OFF SPST



MP39350**
MP39352 (Bulk 100pcs/carton)
PUSH BUTTON SWITCH
 MOM ON - OFF SPST

- Solid brass construction
- Weather resistant plasticized coating
- Rubber boot nut
- Two 12" L 18 gauge wire leads
- Mounting bushing 15/16" L X 5/8"-32
- Rated: 10 amps @ 12 VDC



MP39260**
MP39262 (Bulk 100pcs/carton)
WEATHER PROOF BOOT NUT
 (BLACK)

- For push button switches
- Chrome face nut
- Seals out moisture & dirt
- Tapered design



UN42000**
UN42002 (Bulk 100pcs/carton)
MOM ON - OFF SPST

- Extra heavy duty die cast construction
- Silver contacts
- 2 boss screw terminals
- Rubber boot nut
- Rated: 60 amp @ 12 VDC



MP39140
MP39142 (Bulk 100pcs/carton)
PUSH BUTTON SWITCH
COVER (BLACK)

FUSES



AGA GLASS TUBE FUSES
 1/4" X 5/8"

PART #	RATING	PER PACK
FS79060**	20 AMP	5
FS79070	30 AMP	5



SFE GLASS TUBE FUSES

PART #	RATING	SIZE	PER PACK
FS79270	14 AMP	1/4" X 1"	5
FS79280	20 AMP	1/4" X 1 1/4"	5



AGU GLASS TUBE FUSES
 13/32" X 1 1/2"

PART #	RATING	PER PACK
FS79820	20 AMP	2
FS79870**	50 AMP	2



AGC GLASS TUBE FUSES
 1/4" X 1 1/4"

PART #	RATING	PER PACK
FS79090	1 AMP	5
FS79100	1.5 AMP	5
FS79110**	2 AMP	5
FS79470	2.5 AMP	5
FS79120**	3 AMP	5
FS79130**	4 AMP	5
FS79140**	5 AMP	5
FS79150**	6 AMP	5
FS79160**	7.5 AMP	5
FS79170**	10 AMP	5
FS79180**	15 AMP	5
FS79190**	20 AMP	5
FS79200**	25 AMP	5
FS79210**	30 AMP	5
FS79220	35 AMP	5



FS79600**
EMERGENCY FUSE KIT
 Contains SIX fuses (1 each)
 SFE 9, 14, 20 and AGC 10, 15, 30.



FS79630**
BILGE PUMP & ACCESSORY FUSE KIT
 Contains FIVE fuses (1 each)
 AGC 5, 10, 15, 30 amp, and 1 SFE 20 amp.

** Display Packaged

ATM & ATO STYLE FUSES



ATO® STYLE FUSES
0.207" W X 0.752" H X 0.76" L

PART #	RATING	COLOR	PER PACK
FS79480**	1 AMP	BLACK	5
FS79490**	2 AMP	GRAY	5
FS79500**	3 AMP	VIOLET	5
FS79510**	4 AMP	PINK	5
FS79520**	5 AMP	TAN	5
FS79530**	7.5 AMP	BROWN	5
FS79540**	10 AMP	RED	5
FS79550**	15 AMP	BLUE	5
FS79560**	20 AMP	YELLOW	5
FS79570**	25 AMP	CREAM	5
FS79580**	30 AMP	GREEN	5
FS79590**	40 AMP	ORANGE	5

*Color coded AMP ratings, plug in automotive style.



ATM STYLE FUSES
0.15" W x 0.429" H x 0.76" L

PART #	RATING	COLOR	PER PACK
FS80000**	2 AMP	GRAY	5
FS80010**	3 AMP	VIOLET	5
FS80030**	5 AMP	TAN	5
FS80040**	7.5 AMP	BROWN	5
FS80050**	10 AMP	RED	5
FS80060**	15 AMP	BLUE	5
FS80070**	20 AMP	YELLOW	5
FS80080**	25 AMP	CLEAR	5
FS80090**	30 AMP	GREEN	5



FS79690**
ATO® FUSE KIT ASSORTMENT



FS79680**
ATM FUSE KIT ASSORTMENT

MAXI™ FUSES

PART #	RATING	COLOR	PER PACK
FS81000	20 AMP	YELLOW	1
FS81010	30 AMP	GREEN	1
FS81020	40 AMP	ORANGE	1
FS81030	50 AMP	RED	1
FS81040	60 AMP	BLUE	1
FS81050	70 AMP	AMBER	1
FS81060	80 AMP	CLEAR	1



- Tin plated copper blades for corrosion protection
- Visible indication of blown condition
- Maximum voltage - 32 VDC

MAXI™ FUSE BLOCK



FS81080

FS81082
(Bulk 100pcs/carton)

- Black Reinforced Polycarbonate
- For Maxi™ fuses 30-80 A
- Snap-on cover insulates conductive parts - meets ABYC & USCG requirements
- Accepts 18-4 AWG wire from sides or bottom
- Maximum voltage - 32 VDC
- Meets SAE J1171

** Display Packaged

ATO/ATC STYLE FUSE BLOCKS



- For ATO/ATC fuses
- Interlocking modules snap together
- 1/4" tin plated copper tab terminals
- Flame resistant reinforced polyester base
- Rated 30 Amps per circuit, 160 Amp total for block

WITH GROUND BUS BAR

PART #	# OF GANGS
FS40420**	6
FS40422*	6
FS40430**	4
FS40432*	4
FS40440**	14
FS40442*	14
FS40450**	8
FS40452*	8
FS40740**	10
FS40742*	10

* Bulk 100pcs./carton



WITHOUT GROUND BUS BAR

PART #	# OF GANGS
FS40410**	14
FS40412*	14
FS56242*	4
FS56232*	6
FS56252*	10

* Bulk 100pcs./carton

GROUND BUS BAR FOR ATO/ATC FUSE BLOCKS

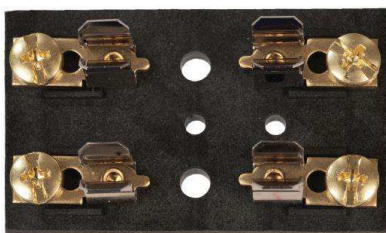


FS40730**

FS40732 (Bulk 100pcs./carton)

- Replacement bus bar for Sierra ATO/ATC fuse blocks
- 14 - 1/4" tin plated copper tab terminals

FUSE BLOCK FOR GLASS TUBE FUSES STANDARD FUSE BLOCKS

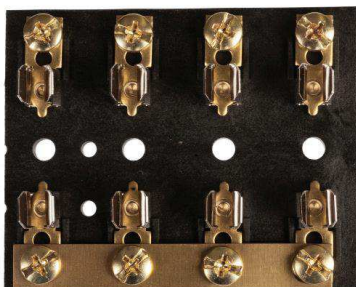


- Use with SFE, AGC, or MDL fuses up to 20 Amp
- Heavy duty black molded base
- 8-32 terminal screws
- Tin plated brass fuse clips

PART #	# OF GANGS
FS40500-1	2
FS40502-1*	2
FS40510-1**	4
FS40512-1*	4
FS40520-1**	6
FS40522-1*	6
FS40530-1	8

* Bulk 100pcs./carton

HOT FEED FUSE BLOCKS



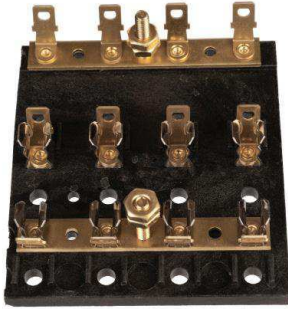
- Use with SFE, AGC, or MDL fuses up to 20 Amp
- Common bus bar connects hot side of fuses for power feed
- Heavy duty black molded base
- 8-32 terminal screws and stud terminal for power connection
- Tin plated brass fuse clips

PART #	# OF GANGS
FS40590-1**	4
FS40592-1*	4
FS40600-1	6
FS40602-1*	6
FS40610-1	8
FS40612-1*	8

* Bulk 100pcs./carton

** Display Packaged

HOT FEED/COMMON GROUND FUSE BLOCKS



- Use with SFE, AGC, or MDL fuses up to 20 Amp
- Common bus bar connects hot side of fuses for power feed
- Separate bus bar for ground or unfused common hot feed
- Heavy duty black molded base
- 8-32 stud terminals for power/ground connection
- 1/4" Q.D. terminals for circuit hookup
- Tin plated brass fuse clips

PART #	# OF GANGS
FS40630-1	4
FS40632-1*	4
FS40640-1	6
FS40642-1*	6
FS40650-1	8
FS40652-1*	8

* Bulk 100pcs./carton



- Use with SFE, AGC, or MDL fuses up to 20 Amp
- Common bus bar connects hot side of fuses for power feed
- Separate bus bar for ground or unfused common hot feed
- Heavy duty black molded base
- 8-32 terminal screws and stud terminals for power/ground connection
- Tin plated brass fuse clips

PART #	# OF GANGS
FS40540-1	2
FS40542-1*	2
FS40550-1**	4
FS40552-1*	4
FS40560-1**	6
FS40562-1*	6
FS40570-1**	8
FS40572-1*	8

* Bulk 100pcs./carton

CORROSION RESISTANT COMMON BUS BARS



- Use as common hot feed or common ground block
- Tin plated copper bus
- Stainless steel studs & screws
- Large diameter nuts provide large electrical contact area
- Stainless steel screws with lock washers

150 AMP COMMON BUS



FS46100**
FS46102 (Bulk 100pcs./carton)

- 5 - 8-32 Screw Terminals
- 2 - 1/4"-20 Stud Terminals
- Over all size - 4.13"L x .75"W x 1.44"H



FS46150**
FS46152 (Bulk 100pcs./carton)

- 4 - 10-24 Stud Terminals
- Over all size - 4.13"L x .75"W x 1.44"H



FS46200**
FS46202 (Bulk 100pcs./carton)

- 10 - 8-32 Screw Terminals
- 2 - 1/4"-20 Stud Terminals
- Over all size - 6"L x 1.25"W x 1.44"H



FS46250**
FS46252 (Bulk 100pcs./carton)

- 4 - 1/4"-20 Stud Terminals
- Over all size - 6"L x 1.25"W x 1.44"H



FS46400
FS46402 (Bulk 100pcs./carton)

- 20 - 8-32 Screw Terminals
- 2 - 1/4"-20 Stud Terminals
- Over all size - 9 1/4"L x 1.25"W x 1.44"H



FS46450
FS46452 (Bulk 100pcs./carton)

- 6 - 1/4"-20 Stud Terminals
- Over all size - 9 1/4"L x 1.25"W x 1.44"H

** Display Packaged

CORROSION RESISTANT COMMON BUS BARS

250 AMP COMMON BUS



FS46300
FS46302 (Bulk 100pcs./carton)

- 12 - 8-32 Screw Terminals
 - 2 - 1/4"-20 Stud Terminals
- Over all size - 7.88"L x 1.5"W x 1.75"H**



FS46350
FS46352 (Bulk 100pcs./carton)

- 4 - 1/4"-20 Stud Terminals
- Over all size - 7.88"L x 1.5"W x 1.75"H**

600 AMP COMMON BUS



FS46551
FS46552 (Bulk 100pcs./carton)

- 4 x 3/8-16 Stud Terminals
- Over all size - 7.00"L x 2"W x 2"H**



FS46561
FS46562 (Bulk 100pcs./carton)

- 8 x 3/8-16 Stud Terminals
- Over all size - 11.375"L x 2"W x 2"H**

BUS BARS INSULATING COVERS



- ABS cover designed to prevent accidental shorting



FSC46100
 Fits FS46100, FS46150



FSC46200
 Fits FS46200, FS46250



FSC46300
 Fits FS46300, FS46350



FSC46400
 Fits FS46400, FS46450



FSC46550
 Fits FS46551



FSC46560
 Fits FS46561

BRASS BUS BARS

- Use as common hot feed or common ground block
- Brass terminal bar
- 150 AMP

FS40720**
FS40722 (Bulk 100pcs./carton)

- 4 - 8-32 Screw Terminals
- Overall size - 4.5"L x .5" W x 1"H**



FS40750
FS40752 (Bulk 100pcs./carton)

- 10 - 10-32 Screw Terminals
 - 2 - 1/4"-20 Stud Terminals
- Overall size - 5.75"L x 1.25 W x 1.19"H**



** Display Packaged

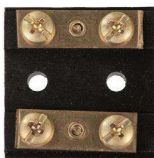
DUAL BRASS BUS BARS



FS40660**

FS40662 (Bulk 100pcs./carton)

- 4 - 8-32 Screw Terminals
- Overall size - 1.5"L x 1.5"W x .44"H

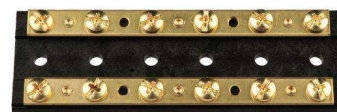


FS40670**

FS40672 (Bulk 100pcs./carton)

- 8 - 8-32 Screw Terminals
- Overall size - 3"L x 1.5"W x .44"H

- Combines negative and positive buses in one block
- Brass terminal bar
- 150 AMP



FS40680**

FS40682 (Bulk 100pcs./carton)

- 12 - 8-32 Screw Terminals
- Overall size - 4.5"L x 1.5"W x .44"H



FS40690**

FS40692 (Bulk 100pcs./carton)

- 16 - 8-32 Screw Terminals
- Overall size - 6"L x 1.5"W x .44"H



FS56152 (Bulk 100pcs./carton)

- 20 - 8-32 Screw Terminals
- Overall size - 7.5"L x 1.5"W x .44"H

BARRIER TYPE JUNCTION BLOCKS



FS45620**

FS45622 (Bulk 100pcs./carton)

- 4 Gang Block
- 8 - 10-32 Screw Terminals
- Overall size - 3.94"L x 1.312"W x 0.812"H



FS45630

FS45632 (Bulk 100pcs./carton)

- 6 Gang Block
- 12 - 10-32 Screw Terminals
- Overall size - 4.36"L x 1.312"W x 0.812"H



FS45640

FS45642 (Bulk 100pcs./carton)

- 8 Gang Block
- 16 10-32 Screw Terminals
- Overall size - 5.33"L x 1.312"W x 0.812"H



FS45650

FS45652 (Bulk 100pcs./carton)

- 10 Gang Block
- 20 10-32 Screw Terminals
- Overall size - 6.31"L x 1.312"W x 0.812"H



ATO/ATC STYLE FUSE HOLDERS



FS35870**

FS35872 (Bulk 100pcs./carton)
FUSE HOLDER

- Weather proof sealed case
- 5" - 12 gauge wire leads
- For ATO/ATC style fuses up to 30 amps



FS69130**

N-186913 (Bulk 100pcs./carton)
FUSE HOLDER

- 5" - 12 gauge wire leads
- For ATO/ATC style fuses up to 30 amps
- Includes 30 amp fuse



FS45410**

FS45412 (Bulk 100pcs./carton)
FUSE HOLDER

- 8" - 14 gauge wire loop
- For ATO/ATC style fuses up to 20 amps

** Display Packaged

WEATHER RESISTANT GLASS TUBE STYLE FUSE HOLDERS

WEATHER RESISTANT FUSE HOLDER
WITH SPARE FUSE COMPARTMENT

PART #	DETAILS
FS69150**	10 GA 8" wire loop w/ two 30 Amp fuses
FS69160**	12 GA 8" wire loop w/ two 20 Amp fuses
FS69170**	14 GA 8" wire loop w/ two 15 Amp fuses
FS69180**	16 GA 8" wire loop w/ two 10 Amp fuses

**FS69140****
HEAVY DUTY FUSE HOLDER

- Weather resistant
- 5" - 8 gauge wire leads
- For 30 to 50 Amp AGC fuses

**FS45440****
FS45442 (Bulk 100pcs./carton)
FUSE HOLDER

- Weather proof sealed case
- 15" - 14 gauge wire loop
- For up to 20 amp SFE, AGC, MDL fuses

**FS45470****
FS45472 (Bulk 100pcs./carton)
FUSE HOLDER

- Weather proof sealed case
- 15" - 10 gauge wire loop
- Includes 30 amp SFE fuse

**FS45460****
FS45462 (Bulk 100pcs./carton)
FUSE HOLDER

- Weather proof sealed case
- 15" - 14 gauge wire loop
- Includes 20 amp SFE fuse

IN-LINE GLASS TUBE STYLE FUSE HOLDERS

**FS45350****
FS45352 (Bulk 100pcs./carton)
FUSE HOLDER

- Black plastic twist lock case
- 8" - 14 gauge wire loop
- Includes 20 amp SFE fuse

**FS45400****
FS45402 (Bulk 100pcs./carton)
FUSE HOLDER

- White plastic twist lock case
- 7" 16 gauge wire loop
- For glass fuses up to 10 amp

**FS45360****
FS45362 (Bulk 100pcs./carton)
FUSE HOLDER

- Red plastic twist lock case
- 8" - 14 gauge wire loop
- Includes 14 amp SFE fuse

**FS69100****
FUSE HOLDER

- Black plastic twist lock case
- 7"- 14 gauge wire loop
- Includes 15 amp fuse

**FS45380****
FS45382 (Bulk 100pcs./carton)
FUSE HOLDER

- Black plastic threaded case
- 7" - 12 gauge wire loop
- Includes 30 amp SFE fuse

**FS69110****
FUSE HOLDER

- Black plastic twist lock case
- 7"- 14 gauge wire loop
- Includes 20 amp fuse

**FS45390****
FS45392 (Bulk 100pcs./carton)
FUSE HOLDER

- Black plastic threaded case
- 7" - 12 gauge wire loop
- Includes 20 amp SFE fuse

**FS69120****
FUSE HOLDER

- Heavy Duty
- 12 gauge tinned copperwire
- Includes 30 amp fuse

PANEL MOUNT GLASS TUBE STYLE FUSE HOLDERS

FS22080**
FS22082 (Bulk 100pcs./carton)
FUSE HOLDER

- Panel mount with red fuse label
- For glass fuses up to 20 amp
- For panels up to 5/16" thick

**FS45430****
FS45432 (Bulk 100pcs./carton)
FUSE HOLDER

- Panel mount
- Weather resistant gasket sealed
- For AGC, MDL fuses
- For panels up to 5/16" thick



** Display Packaged

HIGH AMPERAGE CIRCUIT BREAKERS

* Perfect for rigging trolling motors, windless, and other high amp electrical equipment

AUTO RESET

* INCLUDES STUD MOUNTING PLATE



CB42240**
40 Amp • 12V
CB42250-1**
50 Amp • 12V

MANUAL RESET

* INCLUDES STUD MOUNTING PLATE



CB43240** **CB43250****
40 Amp • 12V 50 Amp • 12V
CB45240 **CB45250**
40 Amp • 24V 50 Amp • 24V



CB60000-1**
CB60002-1 (std. pk of 25)
• Ignition Protected
• Waterproof
• Can be used as switch and circuit breaker
• Replaces Minnkota MKR-19
• Rated - 60 A
• Maximum voltage 42 VDC
• Stainless steel hardware
CB60010**
CB60012 (std. pk of 25)
• Ignition Protected
• Waterproof
• Can be used as switch and circuit breaker
• Rated - 50A
• Maximum voltage 24 VDC
• Stainless steel hardware

TOGGLE TYPE CIRCUIT BREAKERS

- High quality exact replacement on many top brands
- Color coded handles for quick identification of AC/DC
- White handles for DC, black handles for AC
- Clamshell packaging



PART #	AMP RATING	COLOR
CB40200	5	WHITE
CB40220	10	WHITE
CB40230	15	WHITE
CB40240	20	WHITE
CB40250	35	WHITE
CB40190	50	WHITE
CB41240	40	WHITE
CB40260	15	BLACK
CB40270	20	BLACK
CB40280	30	BLACK

PUSH BUTTON RESETTABLE CIRCUIT BREAKERS



- Replacement for popular panel mounted breakers
- Mounts in 3/8" hole
- White buttons for DC, black buttons for AC
- Use **MP39210** for weatherproof boot nut

PART #	AMP RATING	COLOR
CB41100	3	WHITE
CB41200**	5	WHITE
CB41210	10	WHITE
CB41220**	15	WHITE
CB41230**	20	WHITE
CB41210B**	10	BLACK

MP41400**
COMPLETE AUDIBLE WARNING KIT
Contains:

- OP22900**** Oil pressure switch 6 PSI (1/8" - 27) normal closed
- TS25101** Temperature switch (3/8" - 18)
- MC33502** Buzzer switch
- OP22891** Optional oil pressure switch 15 PSI (1/8" - 27) normal closed

Buzzer alerts operator of high engine temperatures or low engine oil pressure. Kit includes instructions, oil pressure switch (set at 6 PSI) and temperature switch (set at 200° F).

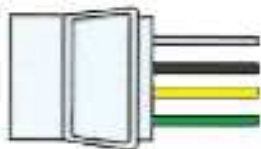


MP39210**
WEATHER PROOF BOOT NUT
• Seals out dirt and moisture
• For use with push button resettable circuit breakers

** Display Packaged

4 POLE FLAT CONNECTORS

Shrouded connectors provide better protection against weather dirt and moisture. Unshrouded connectors are found on most OEM trailers. The plugs are interchangeable and can connect together.



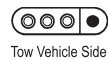
White Ground
Brown Tail, License, Marker Lamps
Yellow Left Turn Signal/Stop Lamp
Green Right Turn Signal/Stop Lamp

** Display Packaged

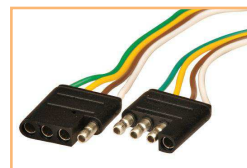
UNSHROUDED



Trailer Side



Tow Vehicle Side



SHROUDED



Trailer Side



Tow Vehicle Side



DESCRIPTION	SET OF BOTH HALVES PART #	TOW VEHICLE SIDE PART #	WIRE LENGTH	TRAILER SIDE PART NUMBER	WIRE LENGTH
4 Pole Flat - Unshrouded	TC43654**	NSS	4-12"	TC44054**	4-12"
4 Pole Flat - Unshrouded		TC44094	3-48", 1-18"	TC44054**	4-12"
4 Pole Flat - Shrouded			4-12"	TC44254	4-12"
4 Pole Flat - Shrouded w/ splicers					
4 Pole Flat - Shrouded		TC44224	3-48", 1-18"	TC44254	4-12"
4 Pole Flat - Shrouded rewire kit	TC43754	TC44224	3-48", 1-18"	NSS	4-20'
4 Pole Flat - Shrouded rewire kit w/ Splicers	TC43744	TC44224	3-48", 1-18"	NSS	4-20'
4 Pole Flat - Shrouded 5' Extension Harness	WH10350				
4 Pole Flat - Shrouded 25' rewire kit				WH10003	4-25'



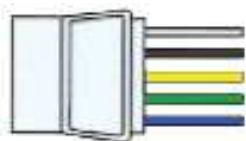
TC52000
TESTER



TC42884
TESTER

Allows for quick and easy diagnosis of trailer/tow vehicle lighting problems; simply plug into vehicle trailer connector. LED lighting allows for each circuit to be quickly tested and evaluated.

5 POLE FLAT CONNECTORS



White Ground
Brown Tail, License, Marker Lamps
Yellow Left Turn Signal/Stop Lamp
Green Right Turn Signal/Stop Lamp
Blue Trailer Brake Solenoid

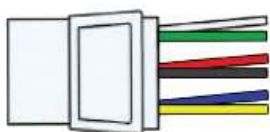
** Display Packaged



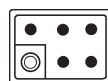
DESCRIPTION	SET OF BOTH HALVES PART #	TOW VEHICLE SIDE PART #	WIRE LENGTH	TRAILER SIDE PART NUMBER	WIRE LENGTH
5 Pole Flat - Unshrouded 18" Extension Harness	TC51000**				
5 Pole Flat - Unshrouded		TC51100	5-48"	TC51200	5-70"

6 POLE SQUARE CONNECTORS

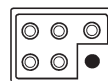
Similar to above except with 6 color coded wires to provide for 5 circuits PLUS ground. Color codes are as follows:



White Ground
Green Right Turn Signal
Red Stop Lamps
Brown Tail & License Lamps
Blue Auxiliary
Yellow Left Turn Lamp



Trailer Side



Tow Vehicle Side



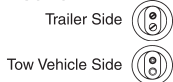
PART #	DESCRIPTION	TOW VEHICLE SIDE REPLACEMENT	WIRE LENGTH	TRAILER SIDE REPLACEMENT	WIRE LENGTH
TC43924	Shrouded set of both halves.	Not sold separately	48"	Not sold separately	12"

POLARIZED CONNECTORS

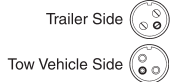
These polarized connector sets plug together only one way to prevent cross connections. Constructed of rugged plastic with molded-in terminals for durability. Wire connections are easy and fast with just a screwdriver. Soft, pliable rubber caps protect the rear of each connector. Dozens of uses. Sold only in mating pairs.



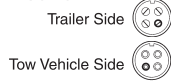
TC43604**
2 Pole Polarized Round



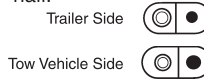
TC43614
3 Pole Polarized Round



TC43624
4 Pole Polarized Round



TC43634**
2 Pole Polarized - Flat with 12" wires on each half.



2-WIRE FLAT CONNECTOR
WH10300**
12", 16 GA, 2 Plugs Ready Wired #E301120
WH10310
60", 16 GA, 2 Plugs Ready-Wired #E302120

HEAVY DUTY CONNECTORS



TC44984**
7 Pole (Blade) RV Style Thermoplastic Converter Kit
This kit is used on tow vehicle to convert any Sierra standard 4 pole flat connector to a 7 pole blade connector used on RV's.



TC43904
Non-Strip Splicers
Four blue non-strip splice connectors for making secure, permanent splices without stripping wires manually. Crimp with pliers and metal insert makes connection. Plastic top folds over to insulate connection.

ELECTRONIC TAILLIGHT CONVERTERS

These reliable electronic devices enable tow vehicles and trailers with mismatched light systems to work together.



TC43944
7 Pole RV Style Connector

Trailer Side



TC43504
Amber/Red to Red Taillight Converter
Universal SPLICE-IN trailer converter for cars and trucks with separate stop and turn signals. Electronic taillight module converts tow vehicle's amber turn signal and red brake light into one combined red brake/turn signal on your trailer.

ADAPTERS

These adapters allow a tow vehicle with a 4, 6 or 7 pole socket to tow a trailer with a different configuration plug. Quality molded plastic connector stores in glove box when not in use.



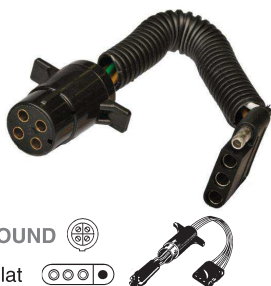
TC50000**
7 Pole RV Style Blade to 5 pole flat - 18" extension harness



TC51300**
7 Pole RV Style Blade to 5 pole flat



TC42834
7 POLE RV STYLE BLADE to 6 Pole Pin



TC42894
4 POLE ROUND to 4 Pole Flat



TC42904
6 POLE ROUND to 4 Pole Flat



TC42914**
7 POLE RV STYLE BLADE to 4 Pole Flat

** Display Packaged

TROLLING MOTOR PLUGS



WH10600-1**
WH10602-1 (PKG OF 100)
 V-GROOVE FEMALE MOTOR SIDE TROLLING MOTOR SOCKET
 12 Volt
 6" - 8 gauge w/ butt connectors
 Use with [WH10610-1](#)



WH10610-1**
WH10612-1 (PKG OF 100)
 V-GROOVE MALE BOAT SIDE TROLLING MOTOR PLUG
 12 Volt
 6" - 8 gauge w/ butt connectors
 Use with [WH10600-1](#)



WH10520-1**
WH10522 (PKG OF 100)
 MALE BOAT SIDE TROLLING MOTOR PLUG
 12 Volt
 6" - 8 gauge w/ butt connectors
 Use with [WH10530-1](#)



WH10530-1**
WH10532 (PKG OF 100)
 FEMALE MOTOR SIDE TROLLING MOTOR SOCKET
 12 Volt
 6" - 8 gauge w/ butt connectors
 Use with [WH10520-1](#)



WH10540-1**
WH10542 (PKG OF 100)
 MALE BOAT SIDE TROLLING MOTOR PLUG
 24 Volt
 6" - 8 gauge w/ butt connectors
 Use with [WH10550-1](#)



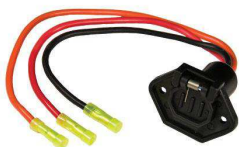
WH10550-1**
WH10552 (PKG OF 100)
 FEMALE MOTOR SIDE TROLLING MOTOR SOCKET
 24 Volt
 6" - 8 gauge w/ butt connectors
 Use with [WH10540-1](#)



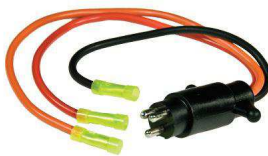
WH10470-1**
WH10472 (PKG OF 100)
 FEMALE BOAT SIDE TROLLING MOTOR SOCKET
 12 Volt
 6" - 10 gauge w/ butt connectors
 Use with [WH10480-1](#)



WH10480-1**
WH10482 (PKG OF 100)
 MALE MOTOR SIDE TROLLING MOTOR PLUG
 12 Volt
 6" - 10 gauge w/ butt connectors
 Use With [WH10470-1](#)



WH10490-1**
WH10492 (PKG OF 100)
 FEMALE BOAT SIDE TROLLING MOTOR SOCKET
 24 Volt
 6" - 10 gauge w/ butt connectors
 Use with [WH10500-1](#)



WH10500-1**
WH10502 (PKG OF 100)
 MALE MOTOR SIDE TROLLING MOTOR PLUG
 24 Volt
 6" - 10 gauge w/ butt connectors
 Use with [WH10490-1](#)



WH10560**
 FEMALE BOAT SIDE TROLLING MOTOR SOCKET
 12 Volt • 3 Slots
 10" - 10 gauge w/ butt connectors
 Use with [WH10570](#)



WH10570**
 MALE MOTOR SIDE TROLLING MOTOR PLUG
 12 Volt • 3 Plugs
 10" - 10 gauge w/ butt connectors
 Use with [WH10560](#)

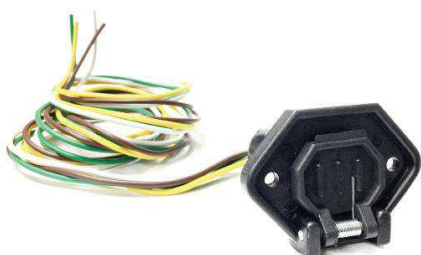


WH10640**
 MALE BOAT SIDE TROLLING MOTOR PLUG
 24 Volt • 60 AMP
 Use with [WH10650](#)



WH10650**
 FEMALE MOTOR SIDE TROLLING MOTOR SOCKET
 24 Volt • 60 AMP
 Use with [WH10640](#)

TRAILER ACCESSORIES



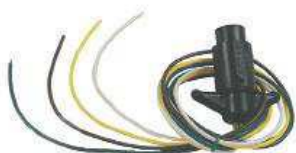
CARSIDE CONNECTORS

WH10040
 48", 16 GA 4/Pole
 Ready-Wired #B240010

WH10230**
 48", 16GA 5/Pole
 Ready-Wired #M242010

** Display Packaged

TRAILER ACCESSORIES



WH10220
TRAILER SIDE CONNECTOR
24", 16 GA, 4/Pole
Ready-Wired #M241120



WH10240**
TRAILER SIDE CONNECTOR
24", 16 GA 5/Pole
Ready-Wired #M243120
Use with [WH10230](#)



WH10320
3- WIRE FLAT CONNECTOR
12", 16 GA, 2 Plugs
Ready Wired #E303120

SOLENOIDS



BA58050

- Steel housing copper contacts
- 12 Volts insulated
- Intermittent rating:
750 amp make
100 amp break
10 seconds ON
20 minutes OFF



18-5840

- Steel housing copper contacts
- 12 Volts grounded
- Continuous rating:
85 amp @ 12 VDC



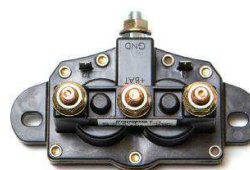
BA58003

- Use as battery isolation switch
- Steel housing copper contacts
- 12 Volts insulated
- Continuous rating:
80 amp @ 12 VDC
- Intermittent rating:
750 amp make
100 amp break
10 seconds ON
30 minutes OFF



BA58010
SOLENOID SWITCH

- Weather resistant plastic coating
- Composite mounting bracket
- 12 V insulated
- Rated 85 A continuous duty



BA58020

- Motor reversing
- Dynamic braking when both coils are in same electrical state
- 12/24V DC
- Intermittent rating: 150A
- Continuous rating: 75 amp (5 min.)

LEVER SWITCHES



MP38910
LEVER OPERATED
BATTERY DISCONNECT SWITCH
Rated 175 A continuous, 800 A intermittent

- 3/8" brass terminals
- Chrome Plated Brass Lever
- Includes faceplate



UN77310**
BATTERY SWITCH
Polyester housing is rust and corrosion proof. Removable plastic key for security. Two position switch "Off-On". Two 10MM X 1.5MM stud terminals. For panels up to 1.25 thick. Four mounting holes in a rectangle 1.3" and .8" on centers. 350 amp continuous rating. 500 amp intermittent rating.

BATTERY ACCESSORIES



BATTERY CABLES
Gauge cable with soldered lug terminals on each end to accept a 3/8" stud.

PART #	SIZE	COLOR	GAUGE
BC88523	2'	RED	4
BC88533	2'	BLACK	4
BC88543	4'	RED	2
BC88553	4'	BLACK	2

PART #	SIZE	COLOR	GAUGE
BC88563	6'	RED	2
BC88573	6'	BLACK	2
BC88583	8'	RED	1
BC88593	8'	BLACK	1

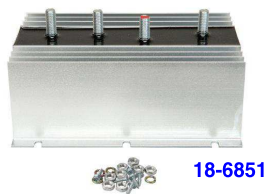


BT44430
LEAD UNIVERSAL
BATTERY TERMINAL

** Display Packaged

BATTERY ISOLATORS

Sierra battery isolators allow for worry free protection against discharging you start battery along with you house battery. Insures battery isolation without needing to check a switch. Allows two or three batteries to be charged at once. All are negative ground.



18-6851



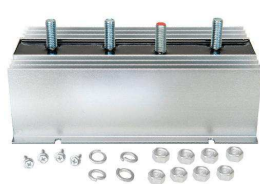
18-6852



18-6853

Part No.	Dimensions	Batteries	Alternators	Terminals	Max. Output
18-6851 ♦	6 1/2" w x 4 1/2" d x 3 1/2" h	3	1	4 - 3/8-16	120 Amp
18-6852 ♦	8" w x 4 1/2" d x 3 1/2" h	2	1	3 - 3/8-16	165 Amp
18-6853 ♦	11" w x 4 1/2" d x 3 1/2" h	3	1	4 - 3/8-16	200 Amp
18-6854 ♦	8" w x 4 1/2" d x 3 1/2" h	3	1	4 - 3/8-16	160 Amp
18-6855 ♣	3 1/4" w x 4 1/2" d x 3 1/2" h	2	1	4-1/4"-18	75 Amp
18-6856 ♣	15" w x 4 1/2" d x 3 1/2" h	2	1	3 - 3/8-16 • 1-1/4"-28	270 Amp

♦ Will not work with Delco CS series alternators ♣ Will work with Delco CS series alternators



18-6854



18-6855



18-6856

TRAILER BEARINGS



18-1100
STANDARD TRAILER BEARING DUST COVER
For Trailer Bearings
1.980 Dia.



TRAILER BEARING KITS

FOR STRAIGHT SPINDLES	
18-1105	1" Bearing Kit (BRG #L44643-L44610)
18-1106	1 1/16" Bearing Kit (BRG #L44649-L44610)
18-1107	1 1/4" Bearing Kit (BRG # LM67048-LM67010)
FOR STEP SPINDLES	
18-1109	1 1/4" & 3/4" Bearing Kit (BRG #LM67048-LM67010, LM11949-LM11910)
18-1110	1 3/8" & 11/16" Bearing Kit (BRG #L68149-L68111, L44649-L44610)



18-79987
TRANSOM PLATE (SMALL)
Size: 2" x 15"
Universal fit plate designed to add transom support.



18-79988
TRANSOM PLATE (LARGE)
Size: 4" x 17"
Oversized universal fit plate designed to add transom support.



TRAILER BEARING SEALS

PART #	O.D.	DIMENSIONS	
		SHAFT SIZE	WIDTH
18-1175	1.985	1.125	.467
18-1176	1.985	1.250	.257
18-1177	2.330	1.500	.408
18-1178	2.566	1.750	.500



COTTER PINS (PKG. OF 10)

PART #	DIMENSIONS	STD. PKG.
18-1199 ①	1/8" x 2"	10
18-3748 ①	7/64" x 1 1/2"	5
18-3746 ①	1/8" x 1"	10
18-3747 ①	5/32" x 1 1/2"	10

① THIS PRODUCT IS PRICED PER PIECE. TO ORDER PRICED PER PACKAGE, PLEASE ADD A -9 TO THE PART NUMBER.

WATERPROOF TERMINALS



16-14 GAUGE RING TERMINALS

STUD SIZE	WIRE GAUGE	INSUL COLOR	PKG. OF 10
8	16-14	Blue	EC63120
10	16-14	Blue	EC63130
1/4"	16-14	Blue	EC63140
5/16"	16-14	Blue	EC63190
3/8"	16-14	Blue	EC63200

12-10 GAUGE RING TERMINALS

STUD SIZE	WIRE GAUGE	INSUL COLOR	PKG. OF 10
8	12-10	Yellow	EC63720
10	12-10	Yellow	EC63240
1/4"	12-10	Yellow	EC63250
5/16"	12-10	Yellow	EC63260
3/8"	12-10	Yellow	EC63300

WATERPROOF CONNECTORS

22-10 GAUGE BUTT CONNECTORS

WIRE GAUGE	INSUL COLOR	PKG. OF 10	100 PACK BOX
22-18	Red	EC64000	EC4000-100
16-14	Blue	EC64110	EC64110-100
12-10	Yellow	EC64230	EC64230-100



RING TERMINALS

22-18 GAUGE RING TERMINALS

STUD SIZE	WIRE GAUGE	INSUL COLOR	PKG. OF 10	100 PACK BOX PART #
6	22-18	Red	EC04010	EC04010-100
8	22-18	Red	EC04020	EC04020-100
10	22-18	Red	N/A	EC04030-100
1/4"	22-18	Red	N/A	EC04040-100



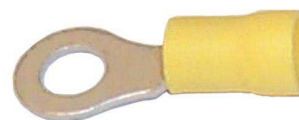
16-14 GAUGE RING TERMINALS

STUD SIZE	WIRE GAUGE	INSUL COLOR	PKG. OF 10	100 PACK BOX PART #
8	16-14	Blue	EC04120	EC04120-100
10	16-14	Blue	EC04130	EC04130-100
1/4"	16-14	Blue	EC04140	EC04140-100
5/16"	16-14	Blue	EC04190	EC04190-100
3/8"	16-14	Blue	EC04200	EC04200-100



12-10 GAUGE RING TERMINALS

STUD SIZE	WIRE GAUGE	INSUL COLOR	PKG. OF 10	100 PACK BOX PART #
6	12-10	Yellow	N/A	EC04710-100
8	12-10	Yellow	N/A	EC04720-100
10	12-10	Yellow	EC04240	EC04240-100
1/4"	12-10	Yellow	EC04250	EC04250-100
5/16"	12-10	Yellow	EC04260	EC04260-100
3/8"	12-10	Yellow	EC04300	EC04300-100



QUICK DISCONNECTS, BULLET, BUTT & SPADE TERMINALS

.157 BULLET TERMINALS

WIRE TYPE	WIRE GAUGE	INSUL COLOR	VISUAL PART # / QTY.	PKG. OF 10	100 PACK BOX PART #
FEMALE	22-18	Red	N/A	EC04080	EC04080-100
MALE	22-18	Red	N/A	N/A	EC04070-100
FEMALE	16-14	Blue	N/A	EC04180**	EC04180-100
MALE	16-14	Blue	N/A	EC04170**	EC04170-100
SET	16-14	Blue	EC01570** / 3 SETS	N/A	N/A



SPADE LUG TERMINALS

STUD SIZE	WIRE GAUGE	INSUL COLOR	PKG. OF 10	100 PACK BOX PART #
8	22-18	Red	EC04090	EC04090-100
10	22-18	Red	EC04100	EC04100-100
8	16-14	Blue	EC04210	EC04210-100
10	16-14	Blue	EC04220	EC04220-100



.250 QUICK DISCONNECTS

Wire Type	Gauge	Insul. Color	Pkg. of 10	100 Pack Box Part #
Female	22-18	Red	EC04050	EC04050-100
Female	16-14	Blue	EC04150	EC04150-100
Male	16-14	Blue	N/A	EC04160-100
Female	12-10	Yellow	EC04280	EC04280-100
Fully Insul. Female	16-14	Blue	EC04500	EC04500-100
Fully Insul. Male	16-14	Blue	EC04490	EC04490-100



BUTT CONNECTORS

Wire Gauge	Insul. Color	Pkg. of 10	100 Pack Box Part #
22-18	Red	EC04000**	EC04000-100
16-14	Blue	EC04110**	EC04110-100
12-10	Yellow	EC04230	EC04230-100

SHRINK/PROTECTIVE FLEX TUBING



TYPE	DIA.	VISUAL PACK PART #	QTY	LENGTH
FLEX TUBING	3/8"	EC01620	1	3'
FLEX TUBING	1/2"	EC01630	1	3'
SHRINK TUBE	ASSORT.	EC01750**	7	ASSORT.

NYLON CABLE CLAMPS



DIA.	VISUAL PACK PART #	QTY
5/16"	EC01440	7
3/8"	EC01450	6
1/2"	EC01460	5



EC06230**
CHARGING CLIP
Rating: 30 AMP
PKG OF 2



EC10290
DURA-TUBE
HEAT-SHRINK TUBING
1 1/4" Long • For 10-20 GA. Wire
PKG OF 25

CLIPS & LEADS



EC01380



EC01370



EC01360



EC01760

ALLIGATOR CLIPS/TEST LEADS

TYPE/SIZE	PKG OF 2	TYPE/SIZE	PKG OF 2
CLIP	EC01360**	CLIP 1-1/4" INSULATED	EC01380**
CLIP 2" w/SCREW TERM	EC01370**	LEADS 30" LONG	EC01760**

EC10250**
3/4" TEST CLIPS
50 AMP
Replaces: OMC 390926
(One Pair)



** Display Packaged



EC09090
DIGITAL MINI MULTIMETER

Compact design and the functions you need for overall convenience. Its low price will surprise you!

- 3 1/2 digit LCD display • 16 test ranges, 6 functions
- Battery & protective holster included • Fuse protected, removable safety leads and jacks

DC Volts: 0-200mV, 2000mV 20V, 200V, 500V
 AC Volts: 0-200V, 500V
 DC Amps: 0-2mA, 20mA, 200mA
 Ohms: 0-200W, 2000W, 20KW, 200KW, 2000KW
 Diode Test: 0-2000W
 Battery Test: 0-9v



EC09040
DUAL VOLTAGE CIRCUIT TESTER

Dual bulb tester for testing both 6 and 12 volt circuits. Also can be used to check spark plug wires. This is the most commonly used tester for troubleshooting auto, truck, van and boat wiring. Supplied with ground wire and clip. Packed one per card.

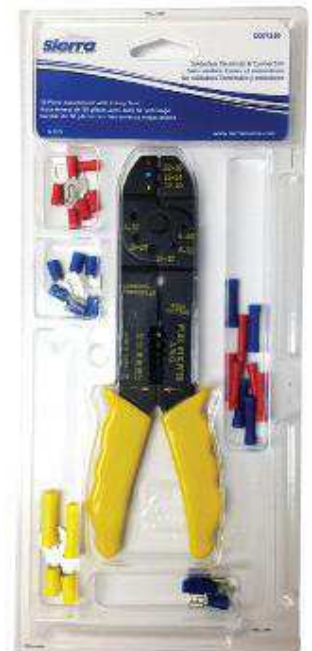


EC01310
TERMINALS & CONNECTORS

175 of the most popular terminals in a shatterproof nylon box.

EC01350
TERMINALS & CONNECTORS W/CRIMP TOOL

30 pc. terminal assortment packed with crimp tool/wire cutter. Attractive 5 compartment clamshell fits neatly in tool box or glove compartment.



Handy for emergencies. Perfect for the do-it-yourselfers.

LOCKS & LATCHES



- MP49410****
MP49412 (Bulk 100pcs./carton)
- Turn to open mechanism – no finger pull
 - Can be locked or left in latch only position
 - Totally corrosion resistant
 - Black glass reinforced polyester
 - Supplied with 2 keys
 - 1" hole size - 1" depth
 - 3/4" panel thickness



- MP49430****
MP49432 (Bulk 100pcs./carton)
- Turn to open mechanism – no finger pull
 - Non-Locking version
 - Totally corrosion resistant
 - Black glass reinforced polyester
 - 1" hole size - 1" depth
 - 3/4" panel thickness



- MP50560****
MP50562 (Bulk 100pcs./carton)
- Black sculped knob
 - Turn to open mechanism – no finger pull
 - Can be locked or left in latch only position
 - Totally corrosion resistant
 - Black glass reinforced polyester
 - Supplied with 2 keys
 - 1" hole size - 1" depth
 - 3/4" panel thickness

** Display Packaged

LOCKS & LATCHES

CAM LOCKS



Secure lockers, hatches, compartments and drawers. 1001 uses. 5 sizes available.

- 3/4" hole size
- +/- 1/4" offset
- 1 1/4" grip length from center of hole.

SIZE	PART #
3/8" DEPTH	CL49300**
5/8" DEPTH	CL49310 **
7/8" DEPTH	CL49320**
1-1/8" DEPTH	CL49330**
1-1/8" DEPTH	CL52422 (Bulk - 100 pcs.)
1-1/8" DEPTH	CL49330KA**
1-3/8" DEPTH	CL49332 (Bulk - 100pcs)

LIFT LATCH

Dozens of applications: bait lockers, fish wells, equipment lockers, hatches, storage compartments. Locking and non-locking styles available. Plate/ring are stainless steel. Holes for #8 mounting screws are 1.5" (w) and 1.312" (h) on center. 3/4" hole size.



MP49500 Non-locking hatch lift only. Measures 2.16" x 1.90" x.25"(h)

HEAVY DUTY DOCKING LIGHTS



10 1/8"

7 1/8"

Recess 5 1/8"

Protect your boat from damage while docking at night!

- ✗ 30,000 cp. bulb illuminates below the deckline. Makes nighttime docking **SAFE & EASY!**
- ✗ Newly-designed housing is **FULLY** sealed! Water cannot enter hull through Docking Light! Old-style O-ring no longer needed to seal hull.
- ✗ **ALIGN & CHANGE** Eyeball from **EXTERIOR** of the hull. Just loosen set screw to align or change Eyeball.
- ✗ **ELIMINATES** the need for access to the rear of the installed Docking Light!
- ✗ New Eyeball **WILL** fit into "old-style" Docking Light housing!
- ✗ New-style housing will fit existing cut-out with only slight modification.
- ✗ Mil-Spec sealed **Waterproof/Dustproof** rocker switch panel included.
- ✗ US Patent #5672004
- ✗ **Intended for Docking Only, Not for Continuous Use.**

DOCKING LIGHTS

PART #	DESCRIPTION	COLOR	WATTS
95001	12v Marine Docking Light Set - Incandescent Bulb (Set of 2)	White	100
95002	12v Marine Replacement Light for 95001 (bulb w/ eyeball)		
95013	28v Marine Docking Light Set - Incandescent Bulb (Set of 2)	White	50
95004	28v Marine Replacement Light for 95013 (bulb w/ eyeball)		
95016	12v Marine Replacement Light for 95021 (bulb w/ eyeball)	--	100
AUXILIARY LIGHTS			
95011	12v Single Light Kit - Halogen Bulb (Set of 1)	White	100
95026	12v Marine Docking Light Set - Halogen Bulb (bulb w/ eyeball)		
PARTS			
95005	Housing	White	---
95006	Hardware Kit	--	---

POWER POLE REPLACEMENT PUMPS



18-6818
TRIM MOTOR
Replaces:
Power Pole PUMP SPN-F
Fits: Power Pole Sportsman Models



18-6819
TRIM MOTOR
Replaces:
Power Pole PUMP PRO-F
Fits: Power Pole Pro Models

** Display Packaged